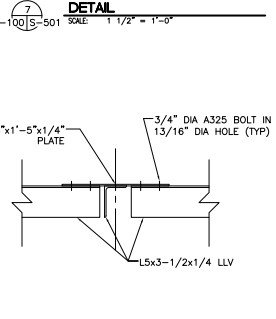
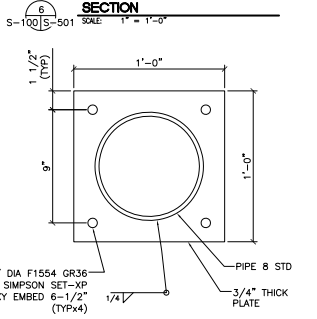
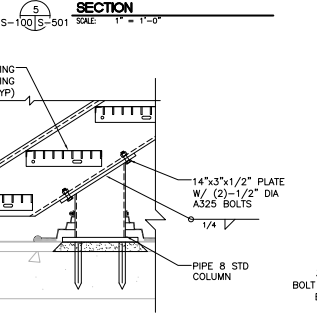
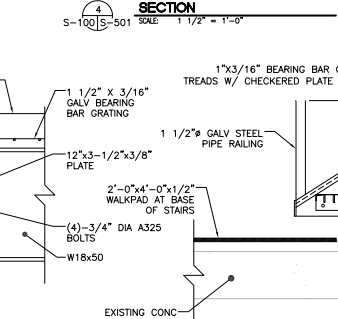
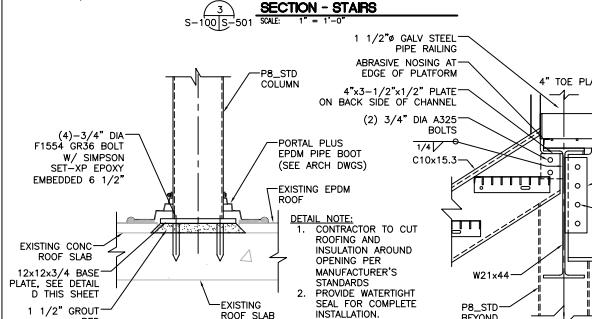
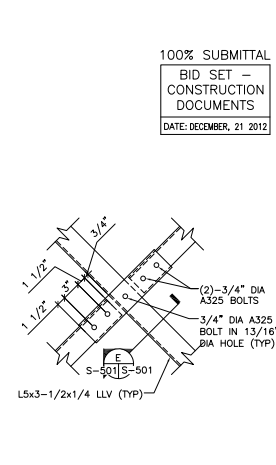
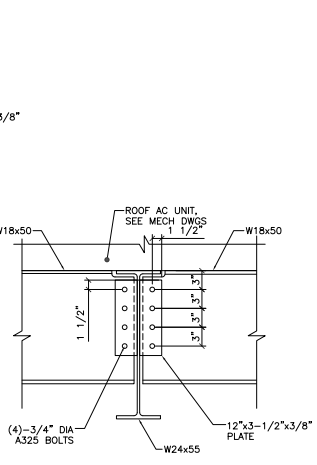
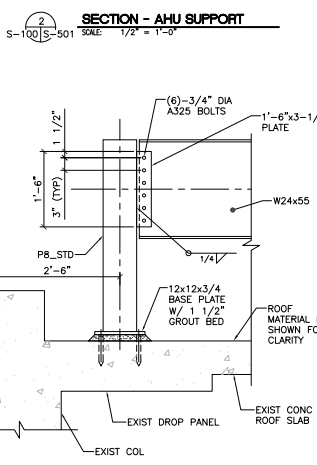
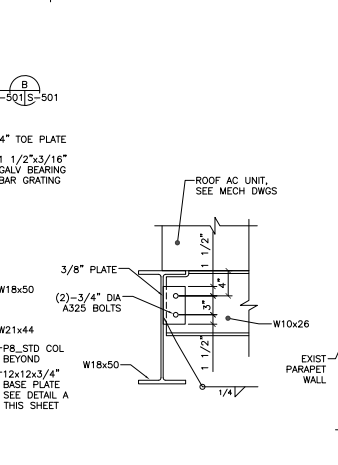
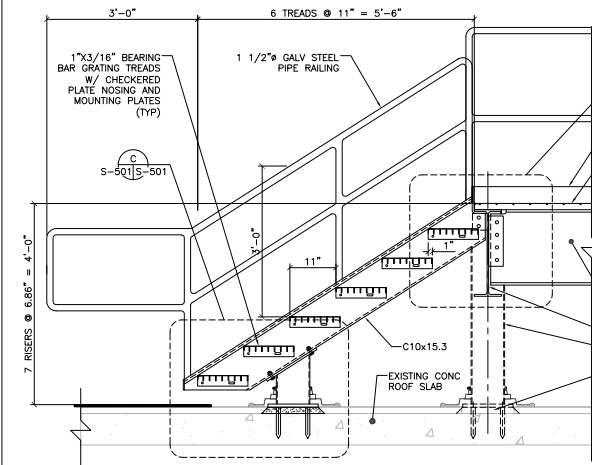
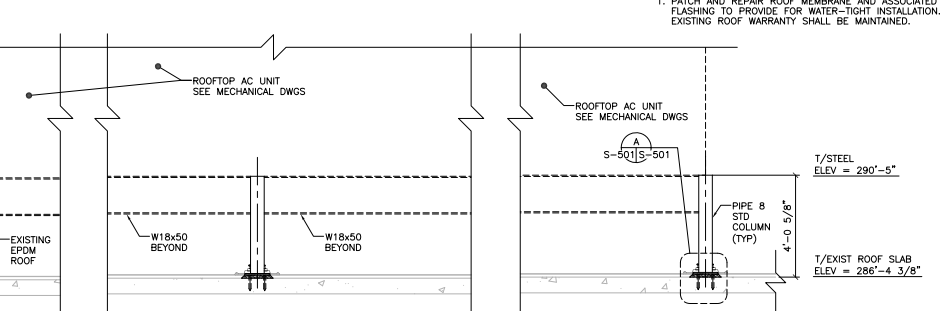
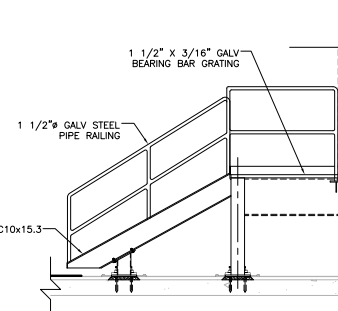
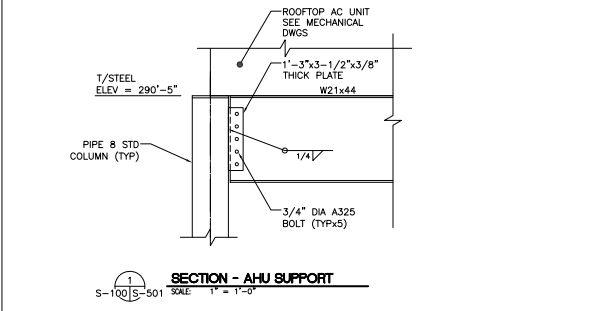


GENERAL NOTES

1. PATCH AND REPAIR ROOF MEMBRANE AND ASSOCIATED FLASHING TO PROVIDE WATER-TIGHT INSTALLATION. EXISTING WARRANTY SHALL BE MAINTAINED.

A
THREE INCHES = ONE FOOT
 B
ONE AND ONE-HALF INCHES = ONE FOOT
 C
ONE INCH = ONE FOOT
 D
THREE-QUARTERS INCH = ONE FOOT
 E
ONE-HALF INCH = ONE FOOT
 F
THREE-FOURTHS INCH = ONE FOOT
 G
ONE-FOURTH INCH = ONE FOOT



DETAIL - AHU SUPPORT
S-501S-501 SCALE: 1 1/2" = 1'-0"

DETAIL-T/STAIRS CONNECTION
S-501S-501 SCALE: 1 1/2" = 1'-0"

DETAIL-B/STAIRS CONNECTION
S-501S-501 SCALE: 1 1/2" = 1'-0"

DETAIL
S-501S-501 SCALE: 1 1/2" = 1'-0"

SECTION
S-501S-501 SCALE: 1 1/2" = 1'-0"

1/2"=1'-0" 1 1/2"=1'-0" 1"=1'-0" 3/4"=1'-0"
 BID SET - 100% CONSTRUCTION DOCUMENTS
 FULLY SPRINKLERED

BY	REVISIONS	DATE

LINDBERGH & ASSOCIATES, LLC
 2170 Ashley Phosphate Road - Suite 504
 Charleston, South Carolina, 29406
 Phone: (843)553-6670 Fax: (843)553-0755



CONFIDENTIAL THESE DRAWINGS MUST BE RETURNED TO FACILITIES MANAGEMENT SERVICE, PROJECT SECTION, UPON COMPLETION, OR FINAL USE BY THE CONTRACTOR FOR BOOKING PURPOSES.
ASBESTOS WARNING: ASBESTOS CONTAINING BUILDING MATERIALS (ACBM) ARE PRESENT THROUGHOUT THE FACILITY. IF CONTRACTORS FIND ACBM, OR SUSPECT FINDING ACBM, THEY SHALL IMMEDIATELY STOP WORK AND CONTACT THE PROJECT COTR.
SCALING NOTES: FULL SIZE V.A. "T" SHEETS (SCALE AS INDICATED) AND HALF SIZE V.A. "D" SHEETS (@ THE SCALE INDICATED LETTER SIZE DRAWINGS ARE NOT TO SCALE).
GENERAL NOTE: CONTRACTORS AND ARCHITECT/ENGINEERING FIRMS ARE RESPONSIBLE FOR THE FIELD VERIFICATION OF ALL EXISTING CONDITIONS.

Project Title
RENOVATE WARD 5 EAST

Drawing Title	Date
FIFTH FLOOR - WARD EAST STRUCTURAL SECTIONS & DETAILS	12/21/12
Building Number	Checked
47	CTV
Location	Drawn
ASHEVILLE, NC	MMY

Drawing No. 637-11-119
 DRAFTING NO. S-501
 Dwg 44 of 78