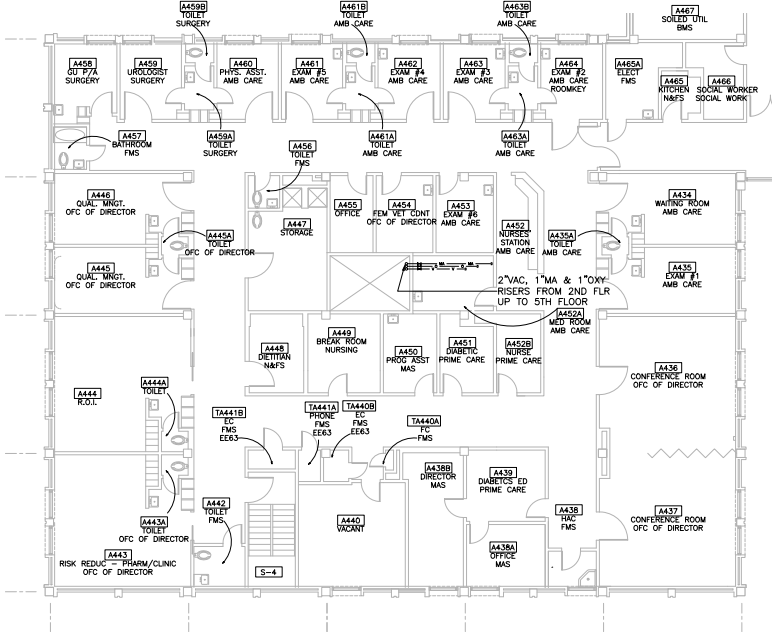


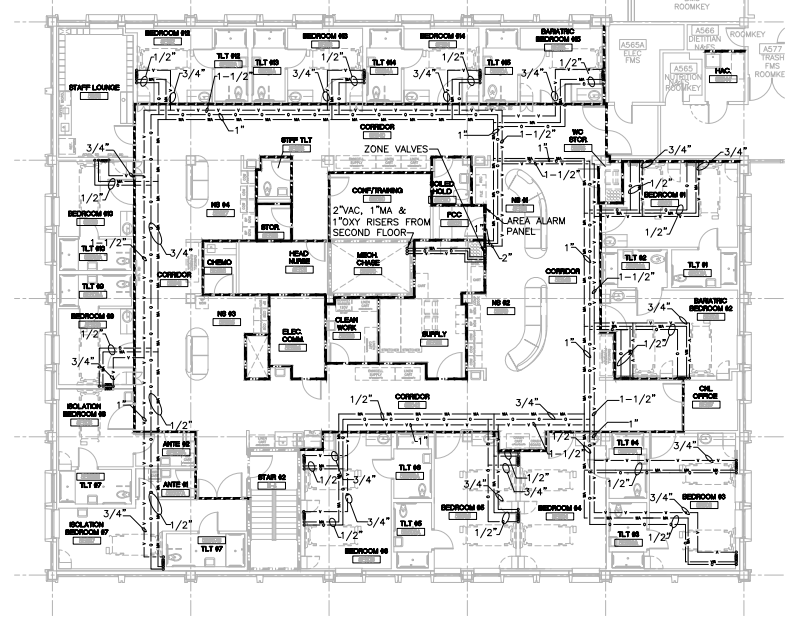
A
THREE INCHES = ONE FOOT
B
ONE AND ONE-HALF INCHES = ONE FOOT
C
ONE INCH = ONE FOOT
D
THREE-QUARTERS INCH = ONE FOOT
E
ONE-HALF INCH = ONE FOOT
F
THREE-EIGHTHS INCH = ONE FOOT
G
ONE-FOURTH INCH = ONE FOOT

PLUMBING GENERAL NOTES

1. SEE DRAWING P108 FOR PIPE HANGER AND MEDICAL ZONE VALVE ASSEMBLY DETAILS.



FOURTH FLOOR WARD EAST MEDICAL GAS PLAN
SCALE: 1/8" = 1'-0"

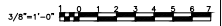
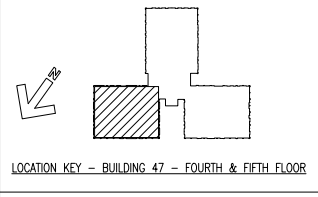


FIFTH FLOOR WARD EAST MEDICAL GAS PLAN
SCALE: 1/8" = 1'-0"

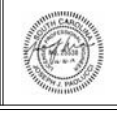
100% SUBMITTAL
BID SET -
CONSTRUCTION
DOCUMENTS
DATE: DECEMBER, 21 2012

WALL LEGEND

- SMOKE RESISTIVE, POSITIVE LATCHING
- SMOKE PARTITION (HAZARDOUS), 1/2 HR. LBL. CLOSER
- SMOKE BARRIER (1 HOUR FIRE RESISTANCE RATED), 1/2 HR. LBL. HOLD OPENS
- 1-HOUR FIRE RESISTANCE RATED BARRIER (HAZ.), 1/2 HR. LBL. CLOSER
- EXISTING TO REMAIN 2-HOUR FIRE RATED



BY	REVISIONS	DATE



CONFIDENTIAL THESE DRAWINGS MUST BE RETURNED TO FACILITIES MANAGEMENT SERVICE, PROJECT SECTION, UPON COMPLETION, OR FINAL USE BY THE CONTRACTOR FOR BIDDING PURPOSES.

ASBESTOS WARNING: ASBESTOS CONTAINING BUILDING MATERIALS (ACBM) ARE PRESENT THROUGHOUT THE FACILITY. IF CONTRACTORS FIND ACBM, OR SUSPECT FINDING ACBM, THEY SHALL IMMEDIATELY STOP WORK AND CONTACT THE PROJECT COTR.

SCALING NOTES: FULL SIZE V.A. 1" SHEETS (SCALE AS INDICATED) AND HALF SIZE V.A. "D" SHEETS (1/2 THE SCALE INDICATED LETTER SIZE DRAWINGS ARE NOT TO SCALE).

GENERAL NOTE: CONTRACTORS AND ARCHITECT/ENGINEERING FIRMS ARE RESPONSIBLE FOR THE FIELD VERIFICATION OF ALL EXISTING CONDITIONS.

Project Title
**RENOVATE
WARD 5 EAST**

Drawing Title
**FOURTH & FIFTH FLOORS -
WARD EAST
MEDICAL GAS PIPING PLANS**

Building Number: 47
Checked: TMF
Location: ASHEVILLE, NC

Date: 12/21/12
Project No.: 637-11-119
Drawing No.: P107
Dwg 63 Of 78

Office of Facilities

University of North Carolina