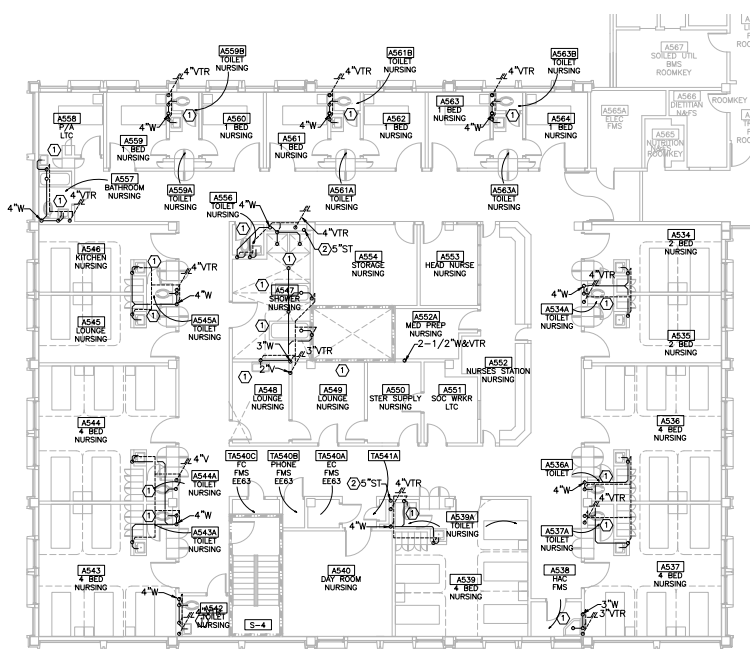
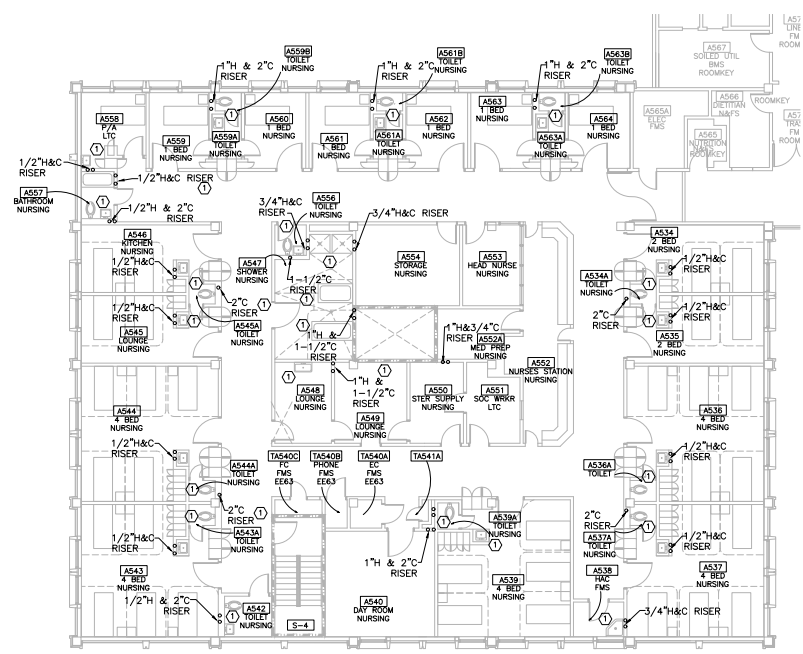


ONE-FOURTH INCH = ONE FOOT  
 ONE-HALF INCH = ONE FOOT  
 ONE-QUARTER INCH = ONE FOOT  
 THREE-EIGHTHS INCH = ONE FOOT  
 ONE AND ONE-HALF INCHES = ONE FOOT  
 THREE INCHES = ONE FOOT



**FIFTH FLOOR WARD EAST WASTE AND VENT DEMOLITION PLAN**  
 SCALE: 1/8" = 1'-0"



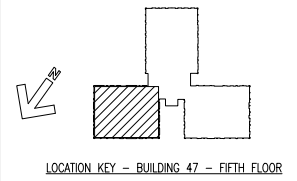
**FIFTH FLOOR WARD EAST HOT AND COLD WATER DEMOLITION PLAN**  
 SCALE: 1/8" = 1'-0"

**PLUMBING DEMO KEYED NOTES**

1. REMOVE ALL EXISTING PLUMBING FIXTURES AND ASSOCIATED WASTE, VENT, HOT AND COLD WATER PIPING. REMOVE EXISTING PIPING BACK TO THEIR RESPECTIVE RISERS BELOW THE FIFTH FLOOR TO ABOVE THE FOURTH FLOOR CEILING AND CAP. EXISTING VTR'S TO REMAIN. FIELD VERIFY EXACT LOCATIONS.
2. 5" STORM DRAIN LEADER TO REMAIN. FIELD VERIFY EXACT LOCATION.

**PLUMBING DEMO GENERAL NOTES**

1. COORDINATE WITH ARCHITECTURAL PLANS FOR FLOOR PENETRATION REPAIR DETAILS.



100% SUBMITTAL  
 BID SET -  
 CONSTRUCTION  
 DOCUMENTS  
 DATE: DECEMBER, 21 2012

1/8"=1'-0"

BY	REVISIONS	DATE



**CONFIDENTIAL** THESE DRAWINGS MUST BE RETURNED TO FACILITIES MANAGEMENT SERVICE, PROJECT SECTION, UPON COMPLETION, OR FINAL USE BY THE CONTRACTOR FOR BIDDING PURPOSES.

ASBESTOS WARNING: ASBESTOS CONTAINING BUILDING MATERIALS (ACBM) ARE PRESENT THROUGHOUT THE FACILITY. IF CONTRACTORS FIND ACBM, OR SUSPECT FINDING ACBM, THEY SHALL IMMEDIATELY STOP WORK AND CONTACT THE PROJECT CONTR.

SCALING NOTES: FULL SIZE V.A. "D" SHEETS (SCALE AS INDICATED) AND HALF SIZE V.A. "D" SHEETS (G OF THE SCALE INDICATED LETTER SIZE DRAWINGS ARE NOT TO SCALE.

GENERAL NOTE: CONTRACTORS AND ARCHITECT/ENGINEERING FIRMS ARE RESPONSIBLE FOR THE FIELD VERIFICATION OF ALL EXISTING CONDITIONS.

Project Title  
**RENOVATE  
 WARD 5 EAST**

Drawing Title	Date	
FIFTH FLOOR - WARD EAST PLUMBING DEMOLITION PLANS	12/21/12	
Building Number	Checked	Drawn
47	TMF	TPL
Location	ASHEVILLE, NC	

Project No.	DRAWING NO.
637-11-119	P102
Dwg	58 OF 78

