

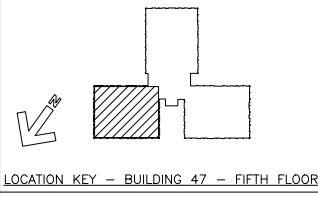
EXISTING LARGE SCALE PENTHOUSE MECHANICAL PLAN
SCALE: 1/4"=1'-0"

GENERAL NOTES - THIS SHEET

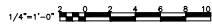
1. FOR GENERAL NOTES AND LEGEND SEE SHEET M001.
2. PROVIDE ALL NEW PIPE SUPPORTS FOR NEW PIPING.
3. PROVIDE INSULATION, JACKETING, AND PIPING IDENTIFICATION PER THE SPECIFICATIONS FOR ALL NEW PIPING.
4. PLAN SHOWN IS PARTIAL, NOT ALL DUCTWORK, PIPING, MECHANICAL EQUIPMENT, ELECTRICAL EQUIPMENT, ETC. IS SHOWN FOR CLARITY. CONTRACTOR SHALL FIELD VERIFY EXACT CONDITIONS, LOCATIONS, ETC., PRIOR TO BIDDING. THE CONTRACTOR SHALL BE RESPONSIBLE FOR ALL COORDINATION.

NEW WORK KEY NOTES

1. CONNECT TO EXISTING CHILLED WATER SUPPLY AND RETURN LINES. PROVIDE ISOLATION BUTTERFLY VALVES AND A CIRCUIT SETTER ON RETURN PIPING. VERIFY EXACT TIE POINT LOCATIONS IN THE FIELD.
2. CONNECT TO EXISTING HOT WATER SUPPLY AND RETURN LINES. PROVIDE ISOLATION BUTTERFLY VALVES AND A CIRCUIT SETTER ON RETURN PIPING. VERIFY EXACT TIE POINT LOCATIONS IN THE FIELD.
3. CONNECT TO EXISTING LOW PRESSURE STEAM SUPPLY AND LOW PRESSURE CONDENSATE RETURN LINES IF AVAILABLE. IF STEAM PRESSURE IS HIGHER THAN 15 PSIG, PROVIDE STEAM PRESSURE REDUCING VALVE STATION AS REQUIRED PER VA STANDARDS. PROVIDE ISOLATION GATE VALVES AT EXISTING MAINS. PROVIDE CHECK VALVE AT CONDENSATE RETURN MAIN. VERIFY EXACT TIE POINT LOCATIONS IN THE FIELD. IF RETURNING LOW PRESSURE CONDENSATE TO HIGH PRESSURE CONDENSATE RETURN, PROVIDE SIMPLEX ELECTRIC CONDENSATE RETURN UNIT COMPLETE WITH PUMP, PIPING, WIRING, CONTROLS, INSULATION PER VA STANDARDS. CONTRACTOR SHALL BE RESPONSIBLE FOR COMPLETE INSTALLATION.
4. REBALANCE CHILLED WATER FLOW TO MATCH EXISTING AT AHU'S AS REQUIRED. PERFORM PRE-TEST AND BALANCE OF CHILLED WATER FLOWS AT AHU'S TO DETERMINE EXISTING CONDITIONS. PROVIDE NEW CIRCUIT SETTER DEVICE IN EXISTING MAIN CHW SUPPLY PIPING IMMEDIATELY BEYOND NEW PIPING ATTACHMENT AND/OR AT EXISTING AHU(S) AS REQUIRED. (FIELD COORDINATE WITH EXISTING). ADJUST MAIN CHW PUMP(S) FLOWRATES (REBALANCE AS REQUIRED).
5. PERFORM PRE-TEST AND BALANCE OF HOT WATER FLOWS AT EXISTING CONVERTORS/HW PUMPS TO DETERMINE EXISTING CONDITIONS. REBALANCE PUMPS AFTER NEW EQUIPMENT IS CONNECTED TO ACHIEVE SAME FLOW AS BEFORE NEW EQUIPMENT WAS ADDED. PROVIDE NEW CIRCUIT SETTER DEVICE IN EXISTING MAIN HW SUPPLY IMMEDIATELY BEYOND NEW PIPING ATTACHMENT AND/OR AT EXISTING MAIN HW PUMPS AS REQUIRED. (FIELD COORDINATE WITH EXISTING). ADJUST MAIN HW PUMP FLOW (BALANCE AS REQUIRED).



100% SUBMITTAL
BID SET -
CONSTRUCTION
DOCUMENTS
DATE: DECEMBER, 21 2012



| BY | REVISIONS | DATE |
|----|-----------|------|
| | | |
| | | |
| | | |
| | | |



CONFIDENTIAL THESE DRAWINGS MUST BE RETURNED TO FACILITIES MANAGEMENT SERVICE, PROJECT SECTION, UPON COMPLETION, OR FINAL USE BY THE CONTRACTOR FOR BIDDING PURPOSES.

ASBESTOS WARNING: ASBESTOS CONTAINING BUILDING MATERIALS (ACBM) ARE PRESENT THROUGHOUT THE FACILITY. IF CONTRACTORS FIND ACBM, OR SUSPECT FINDING ACBM, THEY SHALL IMMEDIATELY STOP WORK AND CONTACT THE PROJECT COTR.

SCALING NOTES: FULL SIZE V.A. "S" SHEETS (SCALE AS INDICATED) AND HALF SIZE V.A. "D" SHEETS (S THE SCALE INDICATED LETTER SIZE DRAWINGS ARE NOT TO SCALE.

GENERAL NOTE: CONTRACTORS AND ARCHITECT/ENGINEERING FIRMS ARE RESPONSIBLE FOR THE FIELD VERIFICATION OF ALL EXISTING CONDITIONS.

Project Title
**RENOVATE
WARD 5 EAST**

| | |
|---|-------------------------------------|
| Drawing Title FIFTH FLOOR - WARD EAST EXISTING PENTHOUSE MECHANICAL PLANS | Date 12/21/12 |
| Building Number 47 | Project No. 637-11-119 |
| Checked TMF | Drawn CMH |
| Location ASHEVILLE, NC | DRAWING NO. M106 Dwg 52 Of 78 |

