

FIFTH FLOOR HVAC DUCT PLAN
 SCALE: 1/8" = 1'-0"

GENERAL NOTES - THIS SHEET

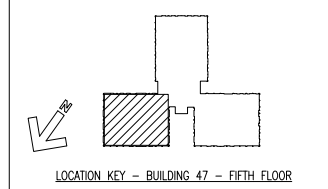
- FOR GENERAL NOTES AND LEGEND SEE SHEET M001.
- ALL DUCTWORK TO BE ROUTED ABOVE CEILING UNLESS OTHERWISE NOTED.
- ALL VAV BOX CONTROLS TO BE DDC.
- ALL BRANCH DUCTS TO VAV BOXES TO MATCH VAV BOX INLET UNLESS INDICATED OTHERWISE ON PLANS.
- PATIENT LIFT TRACK AND SUPPORTING STRUCTURE BY GENERAL CONTRACTOR—SEE ARCHITECTURAL DRAWINGS. COORDINATE, AND SHIFT ALL DUCTWORK, VAV BOXES, DIFFUSERS, AND REGISTERS AS REQUIRED. ADD ALL DUCT FITTINGS AS REQUIRED TO MISS LIFT TRACK. CONTRACTOR SHALL CLEARLY OUTLINE COORDINATION WITH LIGHTS, LIFT TRACK & SUPPORTS, STRUCTURE, PIPING, SEISMIC BRACING, ETC. ON THE COORDINATION SHOP DRAWINGS.
- PROVIDE FIRE DAMPERS IN ALL RATED WALLS AND PARTITIONS.
- PROVIDE ACCESS DOORS IN DUCT AT ALL FIRE AND FIRE SMOKE DAMPERS.
- ALL BRANCH DUCTS TO HAVE VOLUME DAMPERS.
- COORDINATE EXACT REQUIRED LOCATION OF ALL ACCESS PANELS AND DOORS WITH ARCHITECT AND GC.

NEW WORK KEY NOTES

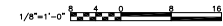
- NEW 34" SQ. SUPPLY DUCT DOWN FROM ROOF AND NEW 26" SQ. SUPPLY DUCT DOWN IN CHASE TO FOURTH FLOOR. EXTEND DUCTS THROUGH FIFTH FLOOR SLAB. INSTALL FIRE DAMPER AT FLOOR. CAP DUCT ABOVE FOURTH FLOOR CEILING FOR FUTURE CONNECTION. INSTALL ACCESS DOOR ABOVE FIRE DAMPER.
- NEW 34" SQ. RETURN DUCT UP TO ROOF AND NEW 26" SQ. RETURN DUCT UP FROM FOURTH FLOOR. EXTEND NEW DUCT THROUGH FIFTH FLOOR SLAB. INSTALL FIRE DAMPER AT FLOOR. CAP DUCT ABOVE FOURTH FLOOR CEILING FOR FUTURE CONNECTION. INSTALL ACCESS DOOR ABOVE FIRE DAMPER.
- EXISTING HOT AND COLD DUCTS FROM AC-4 TO REMAIN.
- CONNECT TO EXISTING EXHAUST DUCT IN CHASE. PROVIDE COMBINATION FIRE/SMOKE DAMPER PER DETAIL AND SEAL PENETRATION PER CODE AND DETAILS.
- EXISTING DUCT FROM AC-5 TO REMAIN.
- AIR VALVE FOR POSITIVE PRESSURE ISOLATION ROOM RETURN—SEE SCHEDULE ON DRAWING M001 FOR SIZE.
- FILTER BOX WITH PRE-FILTERS AND HEPA FILTERS. SEE SCHEDULES. COORDINATE EXACT LOCATION AND PROVIDE SUFFICIENT ACCESS FOR MAINTENANCE. PROVIDE ACCESS DOOR IN CEILING.
- TYPICAL SINGLE DUCT VAV BOX WITH REHEAT COIL. CONTROLS TO BE DDC.
- TYPICAL SINGLE DUCT CONSTANT VOLUME TERMINAL BOX WITH REHEAT COIL. CONTROLS TO BE DDC.

WALL LEGEND

- SMOKE RESISTIVE, POSITIVE LATCHING
- SMOKE PARTITION (HAZARDOUS), 1/2 HR. LBL. CLOSER
- SMOKE BARRIER (1 HOUR FIRE RESISTANCE RATED), 1/2 HR. LBL. HOLD OPENS
- 1-HOUR FIRE RESISTANCE RATED BARRIER (HAZ.), 1/2 HR. LBL. CLOSER
- EXISTING TO REMAIN 2-HOUR FIRE RATED



100% SUBMITTAL
 BID SET -
 CONSTRUCTION
 DOCUMENTS
 DATE: DECEMBER, 21 2012



BY	REVISIONS	DATE



CONFIDENTIAL THESE DRAWINGS MUST BE RETURNED TO FACILITIES MANAGEMENT SERVICE, PROJECT SECTION, UPON COMPLETION, OR FURNISH USE BY THE CONTRACTOR FOR BOOKING PURPOSES.

ASBESTOS WARNING: ASBESTOS CONTAINING BUILDING MATERIALS (ACBM) ARE PRESENT THROUGHOUT THE FACILITY. IF CONTRACTORS FIND ACBM, OR SUSPECT FINDING ACBM, THEY SHALL IMMEDIATELY STOP WORK AND CONTACT THE PROJECT COTR.

SCALING NOTES: FULL SIZE V.A. "S" SHEETS (SCALE AS INDICATED) AND HALF SIZE V.A. "D" SHEETS (1/2 THE SCALE INDICATED LETTER SIZE DRAWINGS ARE NOT TO SCALE).

GENERAL NOTE: CONTRACTORS AND ARCHITECT/ENGINEERING FIRMS ARE RESPONSIBLE FOR THE FIELD VERIFICATION OF ALL EXISTING CONDITIONS.

Project Title
**RENOVATE
 WARD 5 EAST**

Drawing Title FIFTH FLOOR - WARD EAST HVAC DUCT PLAN	Date 12/21/12
Building Number 47	Project No. 637-11-119
Checked TMF	Drawn CMH
Location ASHEVILLE, NC	DRAWING NO. M104 Dwg 50 of 78

FULLY SPRINKLERED

Office of Facilities