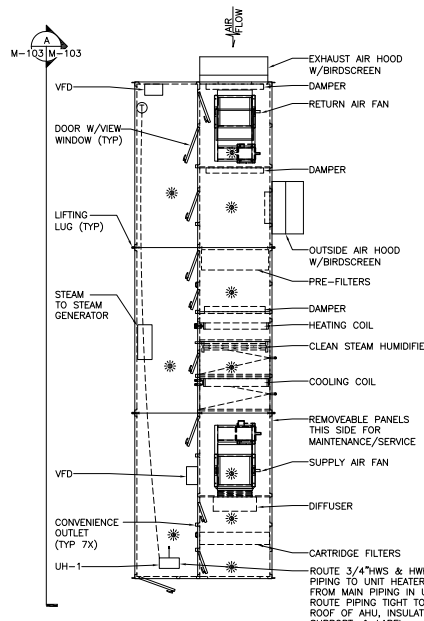
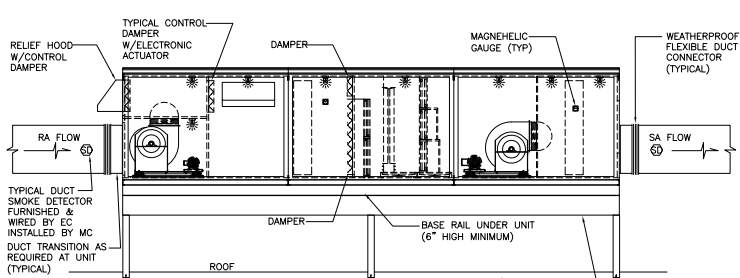


**MECHANICAL ROOF PLAN**  
SCALE: 1/8"=1'-0"



**CUSTOM AIR HANDLING UNIT PLAN**  
SCALE: 1/4"=1'-0"



**CUSTOM AIR HANDLING UNIT ELEVATION**  
SCALE: 1/4"=1'-0"

NOTES:  
1. ELEVATION IS SCHEMATIC ONLY. EXACT UNIT REQUIREMENTS, DIMENSIONS, ETC. TO BE FULLY COORDINATED VS. EXISTING CONDITIONS AND NEW ELEMENTS, (DUCTS, PIPES, ETC.) PRIOR TO BIDDING OR UNIT FABRICATION.  
2. REFER TO EQUIPMENT SCHEDULES, SPECIFICATIONS, AND OTHER DETAILS FOR COMPLETE REQUIREMENTS AS ELEVATION IS SCHEMATIC IN NATURE ONLY.

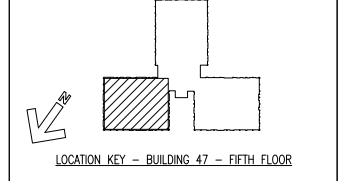
100% SUBMITTAL  
BID SET -  
CONSTRUCTION  
DOCUMENTS  
DATE: DECEMBER, 21 2012

**GENERAL NOTES**

- FOR GENERAL NOTES AND LEGEND SEE SHEET M001.
- ALL EXPOSED DUCTWORK TO BE INSULATED WITH 2" CELLULAR GLASS FOAM INSULATION AND PROVIDED WITH ALUMINUM JACKET AND SEALED WEATHER TIGHT.
- ALL EXPOSED PIPING TO BE INSULATED WITH 2" CELLULAR GLASS FOAM INSULATION, PROVIDED WITH ALUMINUM JACKET AND SEALED WEATHER TIGHT.
- ALL EXPOSED PRESSURE PIPING TO BE PROVIDED WITH SELF-REGULATING HEAT TRACE.
- STRUCTURAL STEEL DUCT SUPPORTS FOR HORIZONTAL AND VERTICAL PIPING AND DUCT RUNS TO BE PROVIDED AND INSTALLED BY GENERAL CONTRACTOR.
- SEE ARCHITECTURAL DRAWINGS FOR PIPE AND DUCT PENETRATION FLASHING DETAILS.
- SEE ARCHITECTURAL DRAWINGS FOR EXACT LOCATIONS OF PIPE AND DUCT PENETRATIONS.
- PIPING AND DUCT SUPPORT LOCATIONS AT UNIT SHALL BE ADJUSTED AS REQUIRED TO FIT FINAL UNIT SELECTION. SUPPORTS SHALL BE ADDED AS REQUIRED.
- PHASING REQUIREMENTS FOR PLACEMENT OF THE AHU ARE AS FOLLOWS:  
a. THE CONTRACTOR SHALL SUBMIT A LAYOUT DRAWING OF THE PROPOSED CRANE PLACEMENT AND SWING TO THE COR FOR APPROVAL PRIOR TO SCHEDULING OF THE CRANE.  
b. AFTER APPROVAL OF THE DRAWING, A "PRE-SWING" WILL OCCUR ON A FRIDAY WITH THE VA SAFETY MANAGER TO ENSURE PROPER SECURITY AND EVALUATION OF AREAS BELOW.  
c. THE CRANE LIFT WILL OCCUR ON THE SATURDAY FOLLOWING A SUCCESSFUL "PRE-SWING".

**NEW WORK KEY NOTES**

- NEW CUSTOM BUILT ROOF TOP AIR HANDLING UNIT. SEE STRUCTURAL PLAN FOR EXACT LOCATION & MOUNTING DETAILS. STRUCTURAL STEEL PLATFORM AND STAIRS PROVIDED BY GC.
- NEW 34"x34" SUPPLY AIR DUCT DOWN THROUGH ROOF PENETRATION TO FLOOR BELOW.
- NEW ROOF OPENING, ROOF PENETRATION, CURBING AND WEATHERPROOFING BY GENERAL CONTRACTOR.
- NEW 34"x34" SUPPLY AIR DUCT, ROUTE EXPOSED ACROSS ROOF. PROVIDE SLIGHT PITCH ON TOWARDS ROOF PENETRATION.
- NEW 34"x34" RETURN AIR DUCT, ROUTE EXPOSED ACROSS ROOF. PROVIDE SLIGHT PITCH ON TOWARDS ROOF PENETRATION.
- NEW 34"x34" RETURN AIR DUCT UP THROUGH ROOF PENETRATION FROM FLOOR BELOW.
- NEW 3/4" HOT WATER SUPPLY AND RETURN LINES AND 1" DOMESTIC COLD WATER LINE DOWN THROUGH ROOF PENETRATION TO FLOOR BELOW.
- NEW 2" HOT WATER SUPPLY AND RETURN LINES TO NEW AIR HANDLING UNIT. ROUTE EXPOSED ACROSS ROOF.
- NEW 4" CHILLED WATER SUPPLY AND RETURN PIPING TO NEW AIR HANDLING UNIT. ROUTE EXPOSED ACROSS ROOF.
- NEW 3" HOT WATER SUPPLY AND RETURN LINES. ROUTE EXPOSED ACROSS ROOF.
- ROUTE NEW HOT WATER SUPPLY AND RETURN LINES UNDER NEW AIR HANDLING UNIT AND UP THROUGH FLOOR OF UNIT PIPE CHASE VESTIBULE. PROTECT AND SEAL OPENINGS.
- ROUTE NEW CHILLED WATER SUPPLY AND RETURN PIPING UNDER NEW AIR HANDLING UNIT AND UP THROUGH FLOOR OF UNIT PIPE CHASE VESTIBULE. PROTECT AND SEAL OPENINGS.
- MAXIMUM PIPE SUPPORT SPAN SHALL BE 7'-0". PROVIDE PIPE SUPPORTS WHERE INDICATED AND AT EVERY COLUMN LINE. (MINIMUM).
- ROUTE NEW CHILLED WATER SUPPLY AND RETURN PIPING UNDER NEW AIR HANDLING UNIT AND UP THROUGH FLOOR OF UNIT PIPE CHASE VESTIBULE. PROTECT AND SEAL OPENINGS.
- PROVIDE 3/4" STEAM TRAP ASSEMBLIES INCLUDING GATE VALVES, STRAINERS, UNIVERSAL CONNECTION TYPE THERMO-DYNAMIC STEAM TRAPS, CHECK VALVES, AND GATE VALVES AT ALL LOW POINTS AND AHEAD OF ALL PIPE RISERS. CONNECT PIPING TO NEW CONDENSATE RETURN PIPING.
- ROUTE 3" COPPER CONDENSATE PIPING FROM UNIT TO THE NEAREST ROOF DRAIN. SUPPORT WITH COOPER DURABLOCK DB10 SUPPORTS AS REQUIRED.
- O/A INTAKE SHALL BE 30"-0" MIN. FROM ANY BUILDING EXHAUST OR PLUMBING VENTS. RELOCATE EXHAUST / VENTS AS REQUIRED.
- EXISTING AC UNIT, EXHAUST FANS, DUCTWORK & SUPPORTS ON ROOF TO REMAIN.
- ROUTE NEW 1" DOMESTIC COLD WATER PIPING UNDER NEW AIR HANDLING UNIT AND UP THROUGH FLOOR OF UNIT PIPE CHASE VESTIBULE. PROTECT AND SEAL OPENINGS.
- PITCH ALL PIPING DOWN FROM PENTHOUSE TOWARDS NEW AIR HANDLING UNIT. PROVIDE DRAINS BELOW UNIT FOR ALL SERVICES.
- MAXIMUM DUCT SUPPORT SPAN SHALL BE 7'-0". PROVIDE DUCT SUPPORTS WHERE INDICATED AND AT EVERY COLUMN LINE. (MINIMUM).



BID SET - 100% CONSTRUCTION DOCUMENTS

FULLY SPRINKLERED

BY	REVISIONS	DATE

**OBRIEN & GERE**

CONFIDENTIAL: THESE DRAWINGS MUST BE RETURNED TO FACILITIES MANAGEMENT SERVICE, PROJECT SECTION, UPON COMPLETION, OR FINAL USE BY THE CONTRACTOR FOR BIDDING PURPOSES.

ASBESTOS WARNING: ASBESTOS CONTAINING BUILDING MATERIALS (ACBM) ARE PRESENT THROUGHOUT THE FACILITY. IF CONTRACTORS FIND ACBM, OR SUSPECT FINDING ACBM, THEY SHALL IMMEDIATELY STOP WORK AND CONTACT THE PROJECT COTR.

SCALING NOTES: FULL SIZE V.A. 1" SHEETS (SCALE AS INDICATED) AND HALF SIZE V.A. 1/2" SHEETS (@ THE SCALE INDICATED LETTER)

GENERAL NOTE: CONTRACTORS AND ARCHITECT/ENGINEERING FIRMS ARE RESPONSIBLE FOR THE FIELD VERIFICATION OF ALL EXISTING CONDITIONS.

Project Title  
**RENOVATE  
WARD 5 EAST**

Drawing Title	Date	
<b>FIFTH FLOOR - WARD EAST MECHANICAL ROOF PLAN</b>	12/21/12	
Building Number	Checked	Drawn
47	TMF	GMH
Location	ASHEVILLE, NC	

Office of Facilities

DRAWING NO. **M103**

Dwg 49 of 78