

NOTE: THIS PROJECT IS A COMPLETE RENOVATION OF THIS AREA OF THE FIFTH FLOOR. GENERALLY, ALL HOT WATER PIPING, CHILLED WATER PIPING, STEAM & CONDENSATE PIPING, SUPPLY AIR DUCTWORK, RETURN AIR DUCTWORK, AND EXHAUST AIR DUCTWORK THAT IS LOCATED ABOVE CEILING THAT IS NOT SERVING OTHER FLOORS, OR PASSING THROUGH THE FIFTH FLOOR, TO BE REMOVED WITHIN THE BOUNDARIES OF THE PROJECT. THIS DRAWING DOES NOT REPRESENT EACH AND EVERY DUCT AND PIPE THAT EXISTS IN THIS AREA THAT WILL BE REQUIRED TO BE REMOVED AND/OR RE-ROOFED. ALL PIPING AND DUCTS THAT PASS THROUGH THIS AREA, VERTICALLY AND/OR HORIZONTALLY, BUT SERVE OTHER SURROUNDING AREAS MAY NOT BE INDICATED ON THESE DRAWINGS. CONTRACTOR SHALL GENERALLY PROTECT THESE ITEMS THAT ARE TO REMAIN, BUT THESE ITEMS MAY BE REQUIRED TO BE REPAIRS, RE-SUPPORTED, OR IN SOME CASES RELATED TO CLEAN NEW CONSTRUCTION OR ITEMS THAT ARE REQUIRED TO BE INSTALLED AS PART OF THIS RENOVATION.

**FIFTH FLOOR DUCTWORK DEMOLITION PLAN**  
SCALE: 1/8"=1'-0"

**GENERAL NOTES**

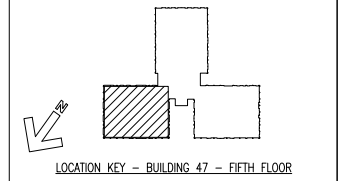
- FOR GENERAL NOTES AND LEGEND SEE SHEET M001.
- REMOVE ALL EXISTING DUCTWORK, DIFFUSER, REGISTERS, HANGERS, AND APPURTENANCES SHOWN ON THIS SHEET UNLESS OTHERWISE NOTED.
- PATCH EXISTING WALLS, FLOORS, AND CEILINGS TO MATCH EXISTING CONDITIONS.
- ALL PNEUMATIC DEVICES ARE TO BE REPLACED WITH ELECTRIC DAMPER MOTORS AND CONTROLS. COORDINATE WITH ELECTRICAL CONTRACTOR FOR A DEDICATED 120V CIRCUIT FOR EACH GROUP OF DAMPERS ASSOCIATED WITH A SINGLE AIR HANDLING UNIT. DAMPERS IN DUCTWORK FROM TWO DIFFERENT AHU'S ARE NOT TO BE POWERED FROM THE SAME CIRCUIT.
- THE EXISTING CONTROL AIR SYSTEM IS TO BE REMOVED COMPLETELY. THIS CONTRACTOR IS TO VERIFY ALL PNEUMATIC DEVICES AND REMOVE/REPLACE AS NECESSARY. EXISTING PNEUMATIC TUBING TO BE REMOVED BACK TO CLOSEST BRANCH SERVING THIS AREA AND CAPPED. FIELD COORDINATE REQUIREMENTS PRIOR TO BIDDING. DISRUPTION OF EXISTING CONTROL AIR SYSTEM TO BE SCHEDULED WITH THE OWNER AS REQUIRED.

**DEMOLITION KEY NOTES**

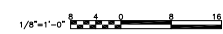
- EXISTING AC-5 SUPPLY DUCT TO REMAIN.
- EXISTING AC-4 HOT AND COLD SUPPLY DUCTS TO REMAIN.
- CAP EXISTING DUCT AT THIS POINT.
- REMOVE EXISTING EXHAUST DUCT TO INSIDE WALL OF VERTICAL DUCT CHASE. DUCT IN CHASE TO REMAIN. PATCH AND REPAIR PENETRATIONS. PROVIDE RATED SEAL AT PENETRATIONS.
- REMOVE EXISTING SINGLE-DUCT REHEAT VAN BOX, HANGERS, WALL MOUNTED CONTROLS, AND ALL ASSOCIATED CONTROL WIRING, TUBING, PIPING, ETC. REMOVE ALL BRANCH DUCTWORK, HANGERS, INSULATION, DIFFUSERS AND GRILLES.
- EXISTING FIRE/SMOKE DAMPERS TO REMAIN. ENSURE SEAL/PENETRATIONS AROUND EXISTING DAMPERS MEET LATEST RATING REQUIREMENTS AND REPAIR AS REQUIRED.

**DEMOLITION LINE TYPES**

- DENOTES EXISTING TO BE REMOVED.
- \_\_\_\_\_ DENOTES EXISTING TO REMAIN.



100% SUBMITTAL  
BID SET -  
CONSTRUCTION  
DOCUMENTS  
DATE: DECEMBER, 21 2012



BID SET - 100% CONSTRUCTION DOCUMENTS

FULLY SPRINKLERED

BY	REVISIONS	DATE



**CONFIDENTIAL** THESE DRAWINGS MUST BE RETURNED TO FACILITIES MANAGEMENT SERVICE, PROJECT SECTION, UPON COMPLETION, OR FINAL USE BY THE CONTRACTOR FOR BIDDING PURPOSES.

**ASBESTOS WARNING:** ASBESTOS CONTAINING BUILDING MATERIALS (ACBM) ARE PRESENT THROUGHOUT THE FACILITY. IF CONTRACTORS FIND ACBM, OR SUSPECT FINDING ACBM, THEY SHALL IMMEDIATELY STOP WORK AND CONTACT THE PROJECT COTR.

**SCALING NOTES:** FULL SIZE V.A. 1" SHEETS (SCALE AS INDICATED) AND HALF SIZE V.A. "D" SHEETS ( @ THE SCALE INDICATED LETTER SIZE DRAWINGS ARE NOT TO SCALE.

**GENERAL NOTE:** CONTRACTORS AND ARCHITECT/ENGINEERING FIRMS ARE RESPONSIBLE FOR THE FIELD VERIFICATION OF ALL EXISTING CONDITIONS.

Project Title  
**RENOVATE  
WARD 5 EAST**

Drawing Title <b>FIFTH FLOOR - WARD EAST EXISTING DUCTWORK DEMOLITION PLAN</b>			Date 12/21/12
Building Number 47			Project No. 637-11-119
Checked TMF	Drawn CMH	DRAWING NO. M102	
Location ASHEVILLE, NC			Dwg 48 of 78

