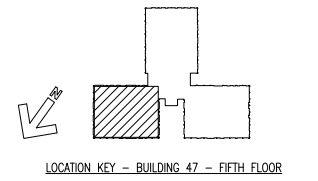


- FINISH GENERAL NOTES**
1. ALL GYPSUM BOARD CEILINGS SHALL BE PC-2. DASHED LINE DENOTES GYPSUM SOFFIT ABOVE. PC-1.
  2. PROVIDE ACCENT TILE BAND, ONE ROW, USING CWT-2 IN ALL TOILETS 6'-0" AFF.
  3. ALL WINDOW SILLS SHALL BE SS-1. FIELD VERIFY EACH LOCATION.
  4. WP-1 WITH CAP IS 4"-0" AFF. TYPICAL ALL LOCATIONS U.N.O. PROVIDE CWT-1 TO 4'-0" AFF IN HAC 5E544.
  5. REFER TO SHEET I-100 FOR FINISH SELECTIONS/ABBREVIATIONS.
  6. ALL UPPER CABINETS SHALL BE L-2.
  7. REFER TO SHEET A-201 FOR TYPICAL ELEVATION OF CORRIDOR FINISHES.

- FINISH KEY NOTES**
1. PROVIDE PEG BOARD ON WALL FROM FLOOR TO CEILING, PAINTED P-1.
  2. PROVIDE FIRE RETARDANT PLYWOOD ON ALL WALLS FROM FLOOR TO CEILING PAINTED P-1.

**LEGEND**

CG DENOTES CORNER GUARD LOCATIONS



100% SUBMITTAL  
 BID SET -  
 CONSTRUCTION  
 DOCUMENTS  
 DATE: DECEMBER, 21 2012

**FIFTH FLOOR-WARD EAST-FINISH PLAN**  
 SCALE: 1/4"=1'-0"

BID SET - 100% CONSTRUCTION DOCUMENTS

FULLY SPRINKLERED

BY	REVISIONS	DATE

**LINDBERGH & ASSOCIATES, LLC**  
 2170 Ashley Phosphate Road - Suite 304  
 Charleston, South Carolina, 29406  
 Phone: (843)553-6670 Fax: (843)553-0755



**CONFIDENTIAL:** THESE DRAWINGS MUST BE RETURNED TO FACILITIES MANAGEMENT SERVICE, PROJECT SECTION, UPON COMPLETION, OR FINAL USE BY THE CONTRACTOR FOR RECORD PURPOSES.

**ASBESTOS WARNING:** ASBESTOS CONTAINING BUILDING MATERIALS (ACBM) ARE PRESENT THROUGHOUT THE FACILITY. IF CONTRACTORS FIND ACBM, OR SUSPECT FINDING ACBM, THEY SHALL IMMEDIATELY STOP WORK AND CONTACT THE PROJECT COR.

**SCALE NOTINGS:** FULL SIZE V.A. "T" SHEETS (SCALE AS INDICATED) AND HALF SIZE V.A. "D" SHEETS (@ THE SCALE INDICATED LETTER)

**GENERAL NOTE:** CONTRACTORS AND ARCHITECT/ENGINEERING FIRMS ARE RESPONSIBLE FOR THE FIELD VERIFICATION OF ALL EXISTING CONDITIONS.

Project Title  
**RENOVATE  
 WARD 5 EAST**

Drawing Title	Date
FIFTH FLOOR - WARD EAST	12/21/12
FINISH PLAN	
Building Number	Checked
47	JSA
Drawn	NEK
Location	
ASHEVILLE, NC	

Project No.	DRAWING NO.
637-11-119	I-101
Dwg	Of
39	78

