

FINISH SCHEDULE

ROOM NO.	FLOORS				BASES				WALLS				CEILING				REMARKS
	CONCRETE	WOOD	PAINT	OTHER	WOOD	PAINT	OTHER	WOOD	PAINT	OTHER	WOOD	PAINT	OTHER	WOOD	PAINT	OTHER	
ROOM NUMBER																	
101																	
102																	
103																	
104																	
105																	
106																	
107																	
108																	
109																	
110																	
111																	
112																	
113																	
114																	
115																	
116																	
117																	
118																	
119																	
120																	
121																	
122																	
123																	
124																	
125																	
126																	
127																	
128																	
129																	
130																	
131																	
132																	
133																	
134																	
135																	
136																	
137																	
138																	
139																	
140																	
141																	
142																	
143																	
144																	
145																	
146																	
147																	
148																	
149																	
150																	

FINISH SCHEDULE
SCALE: NOT TO SCALE

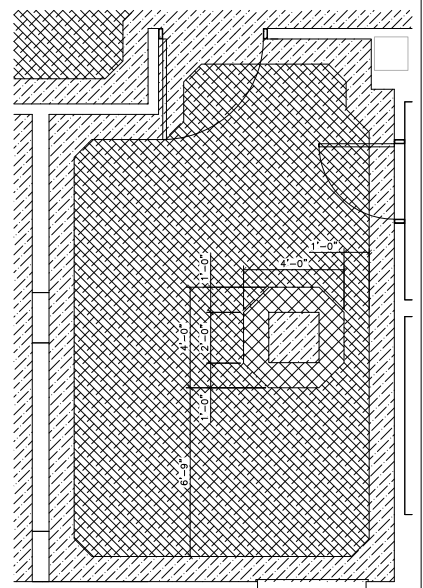
FINISH SELECTIONS

CEILING:
 AT-1: ACOUSTICAL TILE, WHITE DOWN DX/DXL, USG CORPORATION, FROST (CORRIDORS, OFFICES)
 AT-2: ACOUSTICAL CEILING TILE, WHITE DOWN DX/DXL, USG CORPORATION, ASTRO CLAMPLUS, SQUARE (PATIENT ROOMS)
 AT-3: ACOUSTICAL CEILING TILE, WHITE DOWN DX/DXL, USG CORPORATION, SHEETROCK BRAND LAY-IN CEILING PANEL, CLAMPLUS, VINYL (PATIENT TOILETS)
 PC-1: SHERWIN WILLIAMS PAINT GYPSUM BOARD, EGGSHELL PAINT, COLOR: CONNECTED GRAY SW 6165
 PC-2: SHERWIN WILLIAMS PAINT GYPSUM BOARD, EGGSHELL PAINT, COLOR: SIMPLE WHITE SW 7021

FLOORS:
 PT-1: LATICRETE 85 ALMOND - 4" GROUT JOINT
 LVT-1: 18"x18"x4MM BY AMTICO, SERIES AND COLOR TBD
 LVT-2: 12"x12"x4MM BY AMTICO, SERIES AND COLOR TBD
 LVT-3: 12"x12"x4MM BY AMTICO, SERIES AND COLOR TBD
 CP-1: CARPET, DOCTOR B0198 BY BIGELOW, MOHAWK GROUP, 7879 SORATES
 RB-1: RUBBER BASE, JOHNSONITE, 1/4", 6", 36-MANATEE
 RB-2: RUBBER BASE, JOHNSONITE, 1/4", 6", 36-MANATEE
 TS-1: TRANSITION STRIP, 4" TRANSITION STRIP IN CORIAN-BURLED BEACH
 TS-2: TRANSITION STRIP, CARPET EDGE STRIP, VINYL, JOHNSONITE, 36-MANATEE
 SC-1: CLEAR CONCRETE SEALER

WALLS:
 EP-1: SHERWIN WILLIAMS, EPOXY WALL PAINT, USEFUL GRAY, SW 7050
 EP-2: SHERWIN WILLIAMS, EPOXY WALL ACENT PAINT, CONNECTED GRAY, SW 6165
 P-1: SHERWIN WILLIAMS, GENERAL WALL PAINT, USEFUL GRAY, SW 7050
 P-2: SHERWIN WILLIAMS, GENERAL WALL PAINT, ALPACA, SW 7022
 P-3: SHERWIN WILLIAMS, WALL ACENT PAINT, CONNECTED GRAY, SW 6165
 P-4: SHERWIN WILLIAMS, WALL ACENT PAINT, BROWSE BROWN, SW 6012
 CWT-1: DAL-TILE, SERIES: MATTE, 6"x6", X735 MATTE ALMOND GROUT: LATICRETE 85 ALMOND
 CWT-2: DAL-TILE, SERIES: SEMI-GLOSS, 6"x6", 1452 CYPRESS GROUT: LATICRETE 85 ALMOND
 WP-1: TO 4'-0" AFF, IN-PRO CORPORATION, 0281 SMOKEY WITH CAP
 BG-1: BUMPER GUARD, IN-PRO CORPORATION, 0281 SMOKEY
 CG-1: CORNER GUARDS, IN-PRO CORPORATION, 0281 SMOKEY
 WP-2: DOOR FRAME PROTECTION, IN-PRO CORPORATION, 0281 SMOKEY
 HR-1: HANDRAIL, IN-PRO CORPORATION, RED OAK (MATCH HOSPITAL STANDARD)
 DOOR PROTECTION: STAINLESS STEEL KICK PLATES (12" BOTTOM PATIENT ROOMS) (HALF HEIGHT- STORAGE, ELECTRICAL, MECHANICAL)

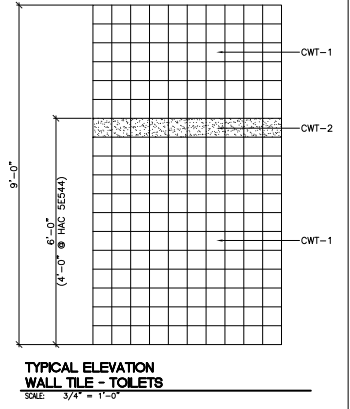
BASEWORK:
 SS-1: SOLID SURFACE, CORIAN, ROSEMARY
 L-1: PLASTIC LAMINATE, WILSONART, GREEN SOAPSTONE, 4885-38
 L-2: PLASTIC LAMINATE, WILSONART, WILD CHERRY, 7054-60



ACCENT MEDALLION DETAIL IN DOUBLE PAT. FM
 SCALE: 1/2" = 1'-0"

GENERAL FINISH NOTES

- MANUFACTURERS LISTED FOR DESIGN INTENT ONLY.
 - COMPONENTS TO BE ASSEMBLED AS SHOWN TO ENSURE CLEANABILITY AND MAINTENANCE OF SPECIFIED PRODUCTS FOR SANITARY CONDITIONS.
 - ALL GRILLES AND DIFFUSERS LOCATED ON GYPSUM BOARD SURFACES SHALL BE PAINTED TO MATCH ADJACENT GYPSUM BOARD FINISH.
 - ALL HOLLOW METAL DOOR FRAMES AND ANY EXISTING HOLLOW METAL DOORS SHALL BE PAINTED WITH SEMI-GLOSS ENAMEL, SHERWIN WILLIAMS, ALPACA-SW7022.
 - FLOOR PATTERNS AND ACCENT WALLS ARE INDICATED ON FINISH SHEETS 1-101 AND 1-102.
 - CEILING FINISHES ARE INDICATED ON THIS SHEET. REFER TO SHEETS A-121 AD 1-101 FOR LOCATIONS.
 - GYPSUM BOARD SOFFITS SHALL BE PAINTED PC-1. GYPSUM BOARD CEILING SHALL BE PAINTED PC-2.
 - "EP" PAINT DENOTES EPOXY PAINT.
 - THRESHOLD AT TOILET ROOMS SHALL BE SOLID SURFACE, TS-1.
 - WINDOW SILL SHALL BE SOLID SURFACE SS-1.
 - IN HAC, SES44, PROVIDE CWT-1 TO 4'-0" AFF.
 - SES04, FLOORING SHALL BE SEALED CONCRETE.
- WINDOWS/DOORS:**
 ALL PATIENT ROOM DOORS, ENTRY DOORS AND STORAGE ROOMS DOORS SHALL HAVE STAINLESS STEEL KICK PLATES TO JUST BELOW DOOR HARDWARE. ALL OTHER DOORS SHALL HAVE 8" STAINLESS STEEL KICK PLATES.
- CABINETS:**
 ALL COUNTERTOPS TO BE SOLID SURFACE BY CORIAN IN ROSEMARY. CASEWORK BASES TO BE WILSONART #7054-60 WILD CHERRY LAMINATE WITH ANODIZED HARDWARE U.O.D.N. UPPER CABINETS TO BE WILSONART #7054-60 WILD CHERRY LAMINATE WITH ANODIZED HARDWARE. CABINET FULLS: SOLID BRASS: FINISH: BRUSHED SATIN NICKEL.
- HANDRAIL/BUMPER GUARD:**
 WALL GUARD AND HANDRAILS SHALL BE RED OAK, 3/4" AFF. BUMPER GUARD TO BE SMOKEY, 18" AFF. NEW TO MATCH EXISTING.



TYPICAL ELEVATION WALL TILE - TOILETS
 SCALE: 3/4" = 1'-0"

100% SUBMITTAL
 BID SET -
 CONSTRUCTION
 DOCUMENTS
 DATE: DECEMBER, 21 2012

BID SET - 100% CONSTRUCTION DOCUMENTS

FULLY SPRINKLERED

BY	REVISIONS	DATE

LINDBERGH & ASSOCIATES, LLC
 2170 Ashley Phosphate Road - Suite 304
 Charleston, South Carolina, 29406
 Phone: (843)553-6670 Fax: (843)553-0755



CONFIDENTIAL: THESE DRAWINGS MUST BE RETURNED TO FACILITIES MANAGEMENT SERVICE, PROJECT SECTION, UPON COMPLETION, OR FINAL USE BY THE CONTRACTOR FOR BIDDING PURPOSES.

ASBESTOS WARNING: ASBESTOS CONTAINING BUILDING MATERIALS (ACBM) ARE PRESENT THROUGHOUT THE FACILITY. IF CONTRACTORS FIND ACBM, OR SUSPECT FINDING ACBM, THEY SHALL IMMEDIATELY STOP WORK AND CONTACT THE PROJECT COY.

SCALING NOTES: FULL SIZE V.A. "T" SHEETS (SCALE AS INDICATED) AND HALF SIZE V.A. "D" SHEETS (@ THE SCALE INDICATED LETTER SIZE DRAWINGS ARE NOT TO SCALE.

GENERAL NOTE: CONTRACTORS AND ARCHITECT/ENGINEERING FIRMS ARE RESPONSIBLE FOR THE FIELD VERIFICATION OF ALL EXISTING CONDITIONS.

Project Title
**RENOVATE
 WARD 5 EAST**

Drawing Title
**FIFTH FLOOR - WARD EAST
 FINISH SCHEDULE**

Building Number
 47

Checked
 JSA

Drawn
 NEK

Location
 ASHEVILLE, NC

Date
 12/21/12

Project No.
 637-11-119

DRAWING NO.
 I-100

Dwg 38 of 78

Office of Facilities
 Department of Veterans Affairs