

FIRE PROTECTION GENERAL NOTES

1. THE DESIGN, LAYOUT, INSTALLATION AND TESTING OF THE FIRE SPRINKLER AND STANDPIPE SYSTEMS SHALL BE IN ACCORDANCE WITH CONTRACT DOCUMENTS, SPECIFICATIONS, 2009 VA FIRE PROTECTION MANUAL, LATEST EDITIONS OF THE NATIONALLY RECOGNIZED FIRE AND LIFE SAFETY CODES, SUCH AS BUT NOT LIMITED TO, NFPA 13, NFPA 14, NFPA 72, NFPA 101 AND NFPA 241. FIRE PROTECTION ALTERATIONS SHALL COMPLY WITH THE VA MASTER CONSTRUCTION SPECIFICATION.
2. ALL COMPARTMENTS SHALL BE PROVIDED WITH COMPLIANT SPRINKLER PROTECTION, INCLUDING ELECTRICAL ROOMS, ETC., UNLESS NOTED OTHERWISE.
3. SPRINKLER SYSTEM SHALL BE COORDINATED TO CORRESPOND TO THE SMOKE ZONE BOUNDARY.
4. ALL COMPARTMENTS SHALL BE CONSIDERED LIGHT HAZARD OCCUPANCY UNLESS NOTED OTHERWISE.
5. SYSTEM PIPING SHALL BE PROVIDED WITH SEISMIC RESTRAINT.
6. ALL SPRINKLERS SHALL BE RECESSED, QUICK RESPONSE, STANDARD COVERAGE, UNLESS NOTED OTHERWISE.
7. LOCATION OF SPRINKLERS SHALL BE COORDINATED WITH CEILING FEATURES AND OBSTRUCTIONS, SUCH AS BUT NOT LIMITED TO, ELEVATION, MATERIAL OF CONSTRUCTION, LIGHTS, GRILLS, DIFFUSERS, CURTAIN TRACK SYSTEM(S), LIFT SYSTEM AND OTHER FEATURES AND/OR OBSTRUCTIONS OF SIMILAR NATURE.
8. A MINIMUM OF 18-INCHES OF CLEARANCE SHALL BE MAINTAINED BETWEEN THE SPRINKLER DEFLECTOR AND ANY STORAGE MATERIALS AND/OR EQUIPMENT IN ACCORDANCE WITH NFPA 13.
9. ALL THROUGH PENETRATIONS OF FIRE RESISTANCE RATED (FRR) BUILDING FEATURES (WALLS, FLOORS, CEILINGS, ETC.) SHALL BE FIRE STOPPED WITH A UL LISTED FRR MATERIAL/ASSEMBLY EQUAL TO OR GREATER THAN THE FRR OF THE PENETRATED BUILDING FEATURE.
10. THE USE OF CPVC PIPE AND FITTINGS IS PROHIBITED.
11. MINIMIZE OR AVOID DISRUPTIONS TO THE FIRE SPRINKLER SYSTEM. WHEN DISRUPTIONS ARE ANTICIPATED, ENSURE PROCEDURES ARE INCORPORATED TO MAINTAIN EQUIVALENT LEVELS OF FIRE PROTECTION AND PROVIDE FORMAL NOTIFICATION TO THE FACILITY WHILE SYSTEMS ARE DOWN.

FIRE PROTECTION LEGEND

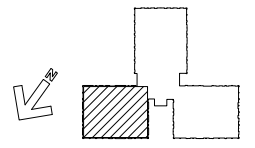
- (OH) INDICATES ORDINARY HAZARD OCCUPANCY
- (EXP) INDICATES OPEN TO STRUCTURE ABOVE
- SMOKE ZONE BARRIER BOUNDARY

FIRE PROTECTION KEY NOTES

1. LOCATION OF EXISTING 6" CLASS I COMBINATION STANDPIPE RISER TO REMAIN.
2. LOCATION OF EXISTING FLOOR CONTROL VALVE ASSEMBLY AT FLOOR LANDING LEVEL TO REMAIN.
3. POINT OF CONNECTION. REMOVE EXISTING SYSTEM AND CONNECT NEW SYSTEM AFTER NEW SYSTEM HAS BEEN INSTALLED, INSPECTED, ACCEPTED, TESTED AND APPROVED.
4. PROVIDE A COMPLETE AND NEW CODE COMPLIANT FIRE SPRINKLER SYSTEM THROUGHOUT THE WARD IN ACCORDANCE WITH NFPA 13.
5. SPRINKLER PROTECTION REQUIRED PER VAFFM. DO NOT INSTALL PIPE DIRECTLY OVER ELECTRICAL EQUIPMENT PER NFPA 70.

WALL LEGEND

- SMOKE RESISTIVE
- - - SMOKE PARTITION (HAZARDOUS)
- SMOKE BARRIER (1-HOUR FIRE RESISTANCE RATED)
- - - 1-HOUR FIRE RESISTANCE RATED BARRIER (HAZ.)
- - - EXISTING TO REMAIN 2-HOUR FIRE RATED
- EXISTING TO REMAIN



LOCATION KEY - BUILDING 47 - FIFTH FLOOR

BID SET - 100% CONSTRUCTION DOCUMENTS

FULLY SPRINKLERED

FIRE PROTECTION PLAN
SCALE: 1/4" = 1'-0"

100% SUBMITTAL
BID SET -
CONSTRUCTION
DOCUMENTS
DATE: DECEMBER, 21 2012 1/4"=1'-0"

BY	REVISIONS	DATE



CONFIDENTIAL THESE DRAWINGS MUST BE RETURNED TO FACILITIES MANAGEMENT SERVICE, PROJECT SECTION, UPON COMPLETION, OR FINAL USE BY THE CONTRACTOR FOR BIDDING PURPOSES.

ASBESTOS WARNING: ASBESTOS CONTAINING BUILDING MATERIALS (ACBM) ARE PRESENT THROUGHOUT THE FACILITY. IF CONTRACTORS FIND ACBM, OR SUSPECT FINDING ACBM, THEY SHALL IMMEDIATELY STOP WORK AND CONTACT THE PROJECT CONTR.

SCALING NOTES: FULL SIZE V.A. "T" SHEETS (SCALE AS INDICATED) AND HALF SIZE V.A. "D" SHEETS (G) THE SCALE INDICATED LETTER SIZE DRAWINGS ARE NOT TO SCALE.

GENERAL NOTE: CONTRACTORS AND ARCHITECT/ENGINEERING FIRMS ARE RESPONSIBLE FOR THE FIELD VERIFICATION OF ALL EXISTING CONDITIONS.

Project Title
**RENOVATE
WARD 5 EAST**

Drawing Title
**FIFTH FLOOR - WARD EAST
FIRE PROTECTION
PLAN**

Date
12/21/12

Project No.
637-11-119

Building Number
47

Checked
CLB

Drawn
MSMS

Location
ASHEVILLE, NC

DRAWING NO.
FP102

Dwg 77 of 78