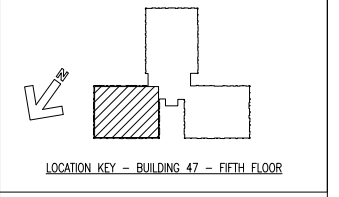


- FIRE ALARM GENERAL NOTES**
- THE DESIGN, LAYOUT, INSTALLATION AND TESTING OF THE FIRE ALARM SYSTEM(S) SHALL BE IN ACCORDANCE WITH CONTRACT DOCUMENTS, SPECIFICATIONS, 2009 VA FIRE PROTECTION MANUAL, LATEST EDITIONS OF THE NATIONALLY RECOGNIZED FIRE AND LIFE SAFETY CODES, SUCH AS BUT NOT LIMITED TO, NFPA 13, NFPA 14, NFPA 25, NFPA 70, NFPA 72 AND NFPA 101.
 - FIRE PROTECTION ALTERATIONS SHALL COMPLY WITH THE VA MASTER CONSTRUCTION SPECIFICATION.
 - ALARM SYSTEM(S) SHALL BE COORDINATED TO CORRESPOND TO THE SMOKE ZONE BARRIER BOUNDARY.
 - THE NEW ADDRESSABLE FIRE ALARM AND DETECTION SYSTEM SHALL BE AN EXTENSION OF THE EXISTING BUILDING FIRE ALARM AND DETECTION SYSTEM (NEW SIMPLEX 4100U PANEL). ALL DEVICES, APPLIANCES AND COMPONENTS SHALL BE NEW.
 - ALL THROUGH PENETRATIONS OF FIRE RESISTANCE RATED (FRR) BUILDING FEATURES (WALLS, FLOORS, CEILING, ETC.) SHALL BE FIRE STOPPED WITH A UL LISTED FRR MATERIAL/ASSEMBLY EQUAL TO OR GREATER THAN THE FRR OF THE PENETRATED BUILDING FEATURE. WIRING SHALL BE AS FOLLOWS: SIGNALING LINE CIRCUITS (SLC) SHALL BE CLASS B, STYLE 4.0; INITIATING DEVICE CIRCUITS (IDC) SHALL BE CLASS B. NOTIFICATION APPLIANCE CIRCUITS (NAC) SHALL BE CLASS B.
 - ACTIVE SMOKE DETECTORS IN OPERATION DURING CONSTRUCTION SHALL BE BAGGED DAILY TO PREVENT FALSE ALARMS, AND RETURN TO OPERATIONAL SERVICE AT THE END OF EACH DAY.
 - STROBE APPLIANCES SHALL PROVIDE A MINIMUM 15 CANDELA IN TOILET ROOMS AND 75 CANDELA IN ALL OTHER AREAS WITH A FLASH RATE OF 1/2 PER SPECIFICATIONS AND BE SYNCHRONIZED PER NFPA 72.

- FIRE ALARM LEGEND**
- ADDRESSABLE MANUAL ALARM BOX DEVICE
 - FIRE SPRINKLER WATER FLOW SWITCH (NEW)
 - FIRE SPRINKLER VALVE TAMPER SWITCH (NEW)
 - STROBE APPLIANCE (WITH CANDELA RATING)
 - COMBINATION SPEAKER/STROBE APPLIANCE
 - MONITOR MODULE
 - ADDRESSABLE SMOKE DETECTOR - PHOTOELECTRIC
 - DUCT SMOKE DETECTOR (RETURN) - PHOTOELECTRIC
 - ELECTROMAGNETIC DOOR HOLDER OPEN DEVICE
 - SMOKE ZONE BARRIER BOUNDARY

- FIRE ALARM KEY NOTES**
- EXISTING FIRE SPRINKLER SYSTEM SHALL BE CONTINUOUSLY ELECTRICALLY SUPERVISED AT ALL TIMES. COORDINATE MINIMAL DISRUPTION TO SERVICE.
 - EXISTING DETECTOR TO REMAIN AND SEQUENCED FOR DOOR HOLD OPEN DEVICE.
 - COORDINATE EXACT LOCATION/QUANTITY WITH MECHANICAL, EQUIPMENT, AND OPERATIONAL SEQUENCING.

- WALL LEGEND**
- SMOKE RESISTIVE
 - SMOKE PARTITION (HAZARDOUS)
 - SMOKE BARRIER (1-HOUR FIRE RESISTANCE RATED)
 - 1-HOUR FIRE RESISTANCE RATED BARRIER (HAZ.)
 - EXISTING TO REMAIN 2-HOUR FIRE RATED
 - EXISTING TO REMAIN



FIRE ALARM PLAN
SCALE: 1/4" = 1'-0"

100% SUBMITTAL
BID SET -
CONSTRUCTION
DOCUMENTS
DATE: DECEMBER, 21 2012

1/4"=1'-0" 0 1 2 3 4 5 6 7 8 10

BID SET - 100% CONSTRUCTION DOCUMENTS

FULLY SPRINKLERED

BY	REVISIONS	DATE



CONFIDENTIAL THESE DRAWINGS MUST BE RETURNED TO FACILITIES MANAGEMENT SERVICE, PROJECT SECTION, UPON COMPLETION, OR FINAL USE BY THE CONTRACTOR FOR BIDDING PURPOSES.

ASBESTOS WARNING: ASBESTOS CONTAINING BUILDING MATERIALS (ACBM) ARE PRESENT THROUGHOUT THE FACILITY. IF CONTRACTORS FIND ACBM, OR SUSPECT FINDING ACBM, THEY SHALL IMMEDIATELY STOP WORK AND CONTACT THE PROJECT COTR.

SCALING NOTES: FULL SIZE V.A. "T" SHEETS (SCALE AS INDICATED) AND HALF SIZE V.A. "D" SHEETS (G) OF THE SCALE INDICATED LETTER SIZE DRAWINGS ARE NOT TO SCALE.

GENERAL NOTE: CONTRACTORS AND ARCHITECT/ENGINEERING FIRMS ARE RESPONSIBLE FOR THE FIELD VERIFICATION OF ALL EXISTING CONDITIONS.

Project Title
**RENOVATE
WARD 5 EAST**

Drawing Title
**FIFTH FLOOR - WARD EAST
FIRE ALARM PLAN**

Date: 12/21/12
Project No.: 637-11-119

Building Number: 47
Checked: CLB
Drawn: MSMS
Location: ASHEVILLE, NC

DRAWING NO. FA102
Dwg 74 Of 78