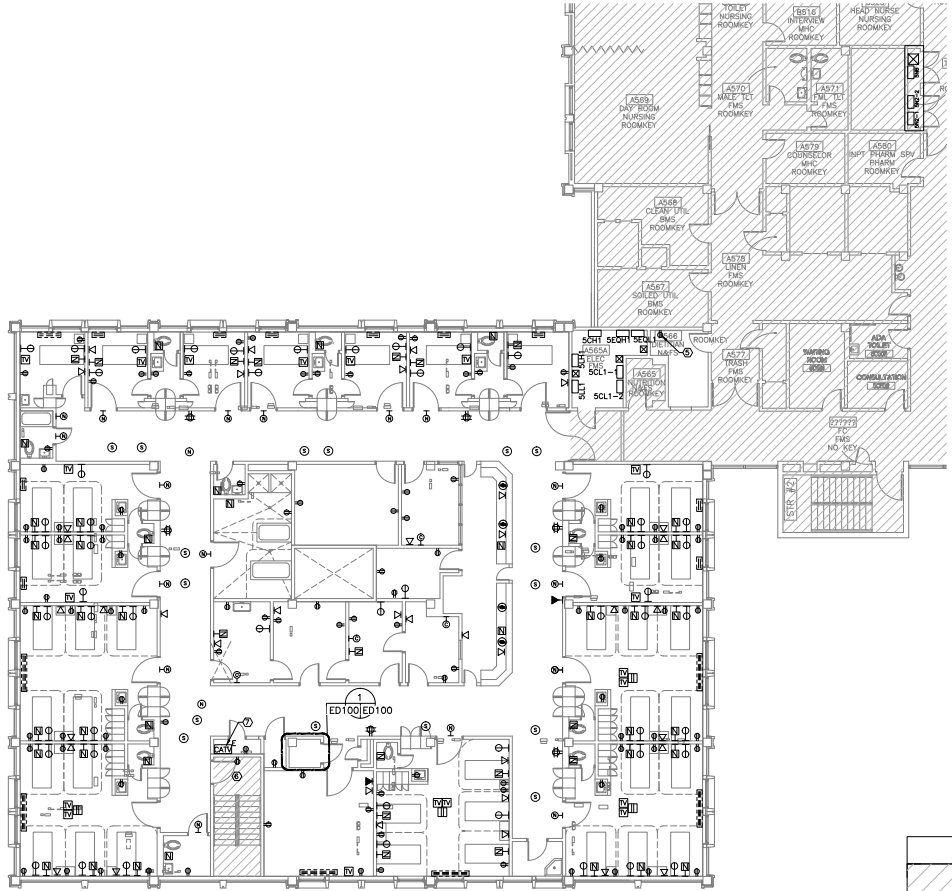


A THREE INCHES = ONE FOOT
 B ONE AND ONE-HALF INCHES = ONE FOOT
 C ONE INCH = ONE FOOT
 D THREE-QUARTERS INCH = ONE FOOT
 E ONE-HALF INCH = ONE FOOT
 F THREE-FOURTHS INCH = ONE FOOT
 G ONE-FOURTH INCH = ONE FOOT



POWER AND SPECIAL SYSTEMS DEMOLITION PLAN
SCALE: 1/8" = 1'-0"

ELECTRICAL DEMOLITION LEGEND

- ⊕ RECEPTACLES
- Ⓢ PAGING SPEAKER
- ⊞ FAN COIL UNITS
- ⊞ RECEPTACLE, DOUBLE DUPLEX.
- ⊞ SPECIAL PURPOSE RECEPTACLE (SINGLE OUTLET)
- ⊞ FLOOR RECEPTACLES, REMOVE BOX AND CABLE AND CAP CONDUIT FLUSHED WITH FLOOR.
- ⊞ CEILING RECEPTACLES
- ⊞ NURSE CALL SYSTEM BEDSIDE STATION
- ⊞ NURSE CALL SYSTEM BATHROOM STATION
- ⊞ TV AND RELATED POWER OUTLET
- ⊞ TELEPHONE OUTLET
- ⊞ LIGHTING SWITCH
- ⊞ LIGHTING FIXTURES
- ⊞ EXIT SIGNS
- ⊞ NURSE CALL LIGHT
- ⊞ CCTV OUTLET
- ⊞ TRANSFORMER, TO BE REMOVED, WALL MOUNTED, 5KVA
- ⊞ CLOCK OUTLET
- ⊞ TRANSFORMER, TO REMAIN.
- ⊞ TRANSFORMER, TO BE REMOVED, FLOOR MOUNTED, 75KVA.
- ⊞ PANELBOARD, TO REMAIN.
- ⊞ PANELBOARD, TO BE REMOVED.
- ⊞ EXISTING DISCONNECT SWITCH, TO BE REMOVED.
- ⊞ TELEPHONE OUTLET.
- ⊞ CEILING NURSE CALL LIGHT.
- ⊞ EXISTING CABLE TV PULL BOX TO BE RELOCATED.

GENERAL DEMOLITION NOTES

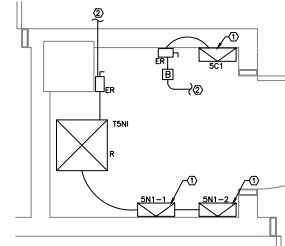
- UNLESS OTHERWISE NOTED, THE DEMOLITION SCOPE OF WORK CALLS FOR THE REMOVAL AND DISPOSE OF ALL ELECTRICAL EQUIPMENT LOCATED WITHIN THE BOUNDARIES OF THE PROJECT AREA. THE ELECTRICAL DEMOLITION DRAWINGS DO NOT NECESSARILY REFLECT ALL ACTUAL ELECTRICAL DEVICES TO BE DEMOLISHED AND/OR ACTUAL LOCATION OF DEVICES.
- CONTRACTOR SHALL OBTAIN ALL EXISTING ELECTRICAL DRAWINGS OF THE AREA FROM THE VA BEFORE STARTING THE DEMOLITION WORK. ALL EXISTING POWER, LIGHTING AND SPECIAL SYSTEM CIRCUITS SHALL BE TRACED BACK TO THEIR SOURCE AND SHALL BE MARKED FOR REMOVAL. REMOVE ALL CONDUITS AND CABLES UP TO SOURCE.
- COORDINATE ALL REQUIRED ELECTRICAL EQUIPMENT SHUT DOWNS WITH THE VA REPRESENTATIVE, PRIOR TO PROCEEDING TO DISCONNECT EQUIPMENT.
- CIRCUIT CONTINUITY SHALL BE MAINTAINED TO ALL AREAS NOT PART OF THE PROJECT DURING AND AFTER CONSTRUCTION. PROVIDE TEMPORARY POWER, LIGHTING AND SPECIAL SYSTEM DURING CONSTRUCTION.

DEMOLITION NOTES

- CONTRACTOR SHALL SURVEY EXISTING LOADS CONNECTED TO THESE PANELBOARDS. ALL LOADS FROM AREAS OUTSIDE THE PROJECT BOUNDARY SHALL BE RECONNECTED TO NEW PANELBOARDS 5N1-2 AND 5C1-2.
- REMOVE EXISTING FEEDER AND CONDUIT BACK TO PANELBOARDS 5N8 AND 5C11. UPDATE PANELBOARD SCHEDULE TO SHOW SPARE BREAKERS FOR EQUIPMENT 15N1 AND 5C1.
- REMOVE EXISTING SPARE STARTER BRACKET AND REPLACE WITH NEW BRACKET AS PER DRAWING E601.
- MCC IS LOCATED IN BLDG 47 PENTHOUSE AREA.
- EXISTING RECEPTACLE TO REMAIN.
- EXISTING DEVICES IN STAIRWELL (RECEPTACLES, LIGHTING, SECURITY, PA SYSTEM ETC.) SHALL REMAIN AND ARE TO REMAIN FUNCTIONAL DURING AND AFTER CONSTRUCTION.
- CATV CABLES CURRENTLY GOING TO 4TH FLOOR SHALL BE PULLED BACK AND EXTENDED TO NEW CATV HUB LOCATION.

LEGEND

DENOTES EXISTING AREA NOT IN CONTRACT.

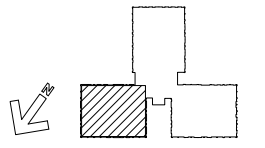


ENLARGEMENT 1
ED100 ED100 SCALE: 3/4" = 1'-0"

	SPARE (SWITCH)	SPARE (SWITCH)	REF-1 2.5 (SWITCH)
METERING 1	SPARE (SWITCH)	SPARE (SWITCH)	ELEVATOR 04 (SWITCH)
METERING 2	ELEVATOR P1 (SWITCH)	ELEVATOR P2 (SWITCH)	ELEVATOR 55 (SWITCH)
	FAN E-55 (STARTER)	FAN E-49 (STARTER)	FAN E-28 (STARTER)
AC-4 (STARTER)	FAN E-26 (STARTER)	RTU (BREAKER)	SPARE
	FAN E-25 (STARTER)	SPACE	FAN E-50 (STARTER)
INCOMING (BREAKER)	FAN E-51 (STARTER)	AC-6 (BREAKER)	ED10 (BREAKER)
	SPACE		

MCC-PE-2 ELEVATION (DEMOLITION)
SCALE: NTS

100% SUBMITTAL
BID SET - CONSTRUCTION DOCUMENTS
DATE: DECEMBER, 21 2012



LOCATION KEY - BUILDING 47 - FIFTH FLOOR

BID SET - 100% CONSTRUCTION DOCUMENTS

FULLY SPRINKLERED

BY	REVISIONS	DATE



CONFIDENTIAL THESE DRAWINGS MUST BE RETURNED TO FACILITIES MANAGEMENT SERVICE, PROJECT SECTION, UPON COMPLETION, OR FINAL USE BY THE CONTRACTOR FOR BIDDING PURPOSES.

ASBESTOS WARNING: ASBESTOS CONTAINING BUILDING MATERIALS (ACBM) ARE PRESENT THROUGHOUT THE FACILITY. IF CONTRACTORS FIND ACBM, OR SUSPECT FINDING ACBM, THEY SHALL IMMEDIATELY STOP WORK AND CONTACT THE PROJECT COTR.

SCALING NOTES: FULL SIZE V.A. "T" SHEETS (SCALE AS INDICATED) AND HALF SIZE V.A. "D" SHEETS (∅ OF THE SCALE INDICATED LETTER SIZE DRAWINGS ARE NOT TO SCALE.

GENERAL NOTE: CONTRACTORS AND ARCHITECT/ENGINEERING FIRMS ARE RESPONSIBLE FOR THE FIELD VERIFICATION OF ALL EXISTING CONDITIONS.

Project Title
RENOVATE WARD 5 EAST

Drawing Title	Date
FIFTH FLOOR - WARD EAST POWER AND COMMUNICATION DEMOLITION PLANS	12/21/12
Building Number	Checked
47	JMA
Location	Drawn
ASHEVILLE, NC	MSMS

Project No.	DRAWING NO.
637-11-119	ED100
Dwg	Of
66	78

