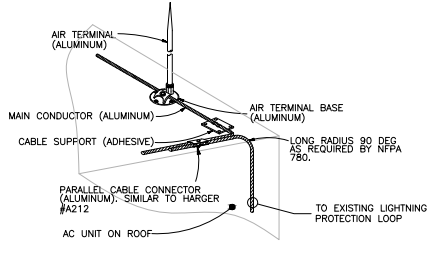
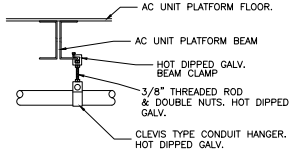


A
THREE INCHES = ONE FOOT
B
ONE AND ONE-HALF INCHES = ONE FOOT
C
ONE INCH = ONE FOOT
D
THREE-QUARTERS INCH = ONE FOOT
E
ONE-HALF INCH = ONE FOOT
F
THREE-QUARTERS INCH = ONE FOOT
G
ONE-FOURTH INCH = ONE FOOT
H
ONE-FOURTH INCH = ONE FOOT
I
ONE-FOURTH INCH = ONE FOOT
J
ONE-FOURTH INCH = ONE FOOT
K
ONE-FOURTH INCH = ONE FOOT
L
ONE-FOURTH INCH = ONE FOOT
M
ONE-FOURTH INCH = ONE FOOT
N
ONE-FOURTH INCH = ONE FOOT
O
ONE-FOURTH INCH = ONE FOOT
P
ONE-FOURTH INCH = ONE FOOT
Q
ONE-FOURTH INCH = ONE FOOT
R
ONE-FOURTH INCH = ONE FOOT
S
ONE-FOURTH INCH = ONE FOOT
T
ONE-FOURTH INCH = ONE FOOT
U
ONE-FOURTH INCH = ONE FOOT
V
ONE-FOURTH INCH = ONE FOOT
W
ONE-FOURTH INCH = ONE FOOT
X
ONE-FOURTH INCH = ONE FOOT
Y
ONE-FOURTH INCH = ONE FOOT
Z
ONE-FOURTH INCH = ONE FOOT

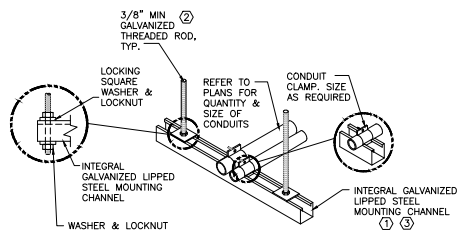
- ④ DRAWING NOTES:**
- METAL CHANNEL STRUT SUPPORT LONGER THAN 36" SHALL BE INSTALLED WITH A CENTER SUPPORT ROD.
 - FASTEN THREADED ROD TO STRUCTURE BY APPROVED METHOD AND AS PER SPECIFICATIONS. FIELD VERIFY EXACT CONDITIONS.
 - BRACE TRAPEZE ASSEMBLY AS REQUIRED FOR THE SPECIFIC SEISMIC AREAS.



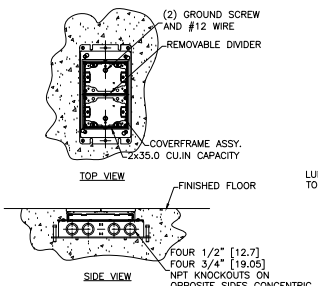
1 LIGHTING PROTECTION SYSTEM MOUNTING DETAIL
SCALE: NTS



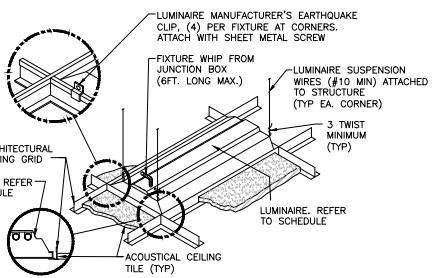
2 OUTSIDE CONDUIT SUPPORT DETAIL
SCALE: NTS



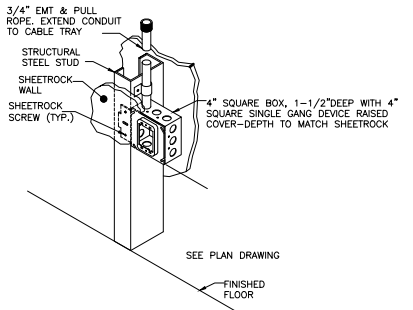
3 CONDUIT TRAPEZE MOUNTING DETAIL
SCALE: NTS



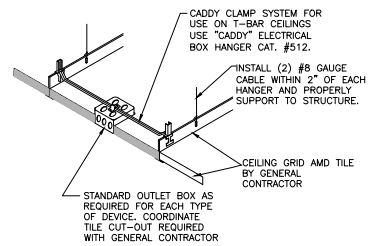
4 RECEPTACLE/TELECOMMUNICATION FLOOR BOX
SCALE: NTS



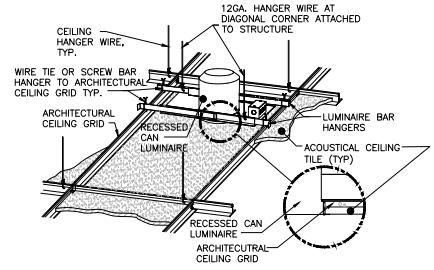
5 LUMINAIRE MOUNTING - LAY-IN CEILING
SCALE: NTS



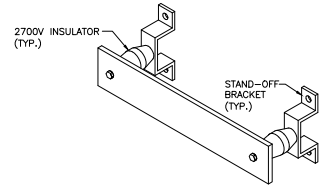
6 4" SQUARE BOX MOUNTING DETAIL FLUSH MOUNTED
SCALE: NTS



7 TYPICAL CEILING DEVICE MOUNTING DETAIL
SCALE: NTS

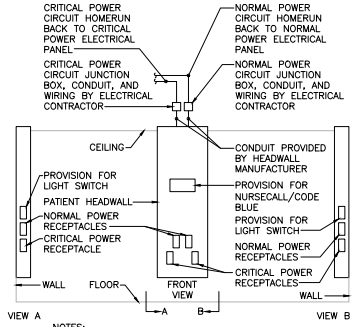


8 DOWNLIGHT MOUNTING - LAY-IN CEILING
SCALE: NTS



- NOTES:**
- SURFACE MOUNT TO WALL WITH APPROVED FASTENERS AT 12-36" ABOVE FLOOR AS PER SPECIFICATIONS.
 - GROUND BAR ASSEMBLY SHALL BE ERICO #EGBA14420HG OR APPROVED EQUAL.

9 WALL MOUNTED GROUND BUS BAR
SCALE: NTS



- NOTES:**
- REFER TO ARCHITECTURAL DRAWINGS AND MANUFACTURER DRAWINGS FOR HEAD WALL SPECIFICATIONS.

10 PATIENT HEADWALL
SCALE: NTS

100% SUBMITTAL
BID SET - CONSTRUCTION DOCUMENTS
DATE: DECEMBER, 21 2012

BID SET - 100% CONSTRUCTION DOCUMENTS
FULLY SPRINKLERED

BY	REVISIONS	DATE



CONFIDENTIAL THESE DRAWINGS MUST BE RETURNED TO FACILITIES MANAGEMENT SERVICE, PROJECT SECTION, UPON COMPLETION, OR FINAL USE BY THE CONTRACTOR FOR BIDDING PURPOSES.

ASBESTOS WARNING: ASBESTOS CONTAINING BUILDING MATERIALS (ACBM) ARE PRESENT THROUGHOUT THE FACILITY. IF CONTRACTORS FIND ACBM, OR SUSPECT FINDING ACBM, THEY SHALL IMMEDIATELY STOP WORK AND CONTACT THE PROJECT COTR.

SCALING NOTES: FULL SIZE V.A. "T" SHEETS (SCALE AS INDICATED) AND HALF SIZE V.A. "D" SHEETS (8 THE SCALE INDICATED LETTER SIZE DRAWINGS ARE NOT TO SCALE.

GENERAL NOTE: CONTRACTORS AND ARCHITECT/ENGINEERING FIRMS ARE RESPONSIBLE FOR THE FIELD VERIFICATION OF ALL EXISTING CONDITIONS.

Project Title
**RENOVATE
WARD 5 EAST**

Drawing Title FIFTH FLOOR - WARD EAST ELECTRICAL DETAILS	Date 12/21/12
Building Number 47	Project No. 637-11-119
Checked JMA	Drawn MSMS
Location ASHEVILLE, NC	DRAWING NO. E602 Dwg 72 OF 78

