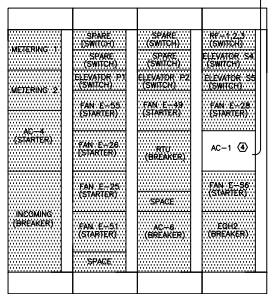
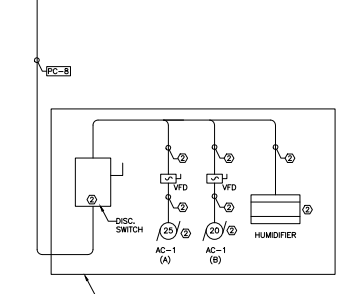


**NORMAL SYSTEM  
PARTIAL SINGLE LINE**  
NTS

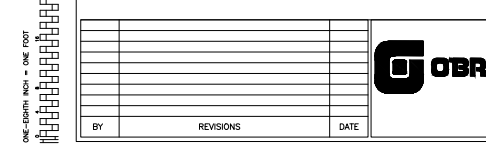
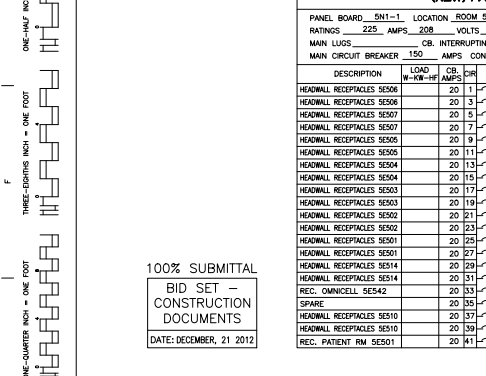
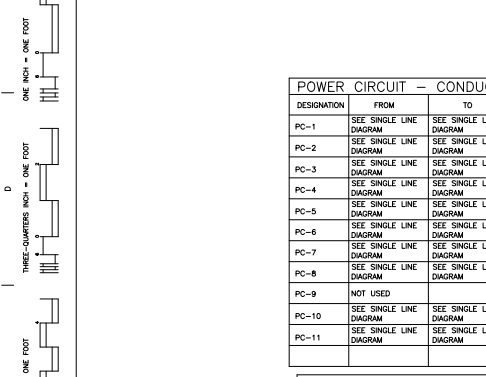
**EMERGENCY SYSTEM  
PARTIAL SINGLE LINE**  
NTS



**MCC-PE-2 ELEVATION**  
NTS



**AC UNIT POWER RISER DIAGRAM**  
NTS



**(NEW) PANEL SCHEDULE**

PANEL BOARD SCH1-E1 LOCATION ROOM 5E24 INSTALLATION SURFACE  
 RATINGS 225 AMPS 480 VOLTS 3 PH 4 WIRE 60 HZ GRD BAR  
 MAIN LUGS \_\_\_\_\_ CB INTERRUPTING RATING 14,200 RMS SYMM AMPS  
 MAIN CIRCUIT BREAKER 100 AMPS CONNECTED LOAD KW PANEL SIZE \_\_\_\_\_

DESCRIPTION	LOAD W-KW-HF	CB AMPS	CB IRR	ABC	CB LOAD W-KW-HF	DESCRIPTION
T-SC1	11	1	1	2	20	LIGHTING
	80	3	4	2	20	LIGHTING
	5	1	1	2	20	LIGHTING
SPARE	20	7	8	2	20	SPARE
SPARE	20	11	12	2	20	SPARE
SPARE	20	11	12	2	20	SPARE
SPARE	20	13	14	2	20	SPARE
SPARE	20	15	16	2	20	SPARE
SPARE	20	17	18	2	20	SPARE
SPARE	20	19	20	2	20	SPARE
SPARE	20	21	22	2	20	SPARE
SPARE	20	23	24	2	20	SPARE

**(EXISTING) PANEL SCHEDULE**

PANEL BOARD 5LH1 LOCATION ROOM A656A INSTALLATION SURFACE  
 RATINGS 100 AMPS 480 VOLTS 3 PH 4 WIRE 60 HZ GRD BAR  
 MAIN LUGS \_\_\_\_\_ CB INTERRUPTING RATING XXX RMS SYMM AMPS  
 MAIN CIRCUIT BREAKER 100 AMPS CONNECTED LOAD KW PANEL SIZE \_\_\_\_\_

EXISTING EQUIPMENT	LOAD W-KW-HF	CB AMPS	CB IRR	ABC	CB LOAD W-KW-HF	DESCRIPTION
	30	3	4	2	20	EXISTING EQUIPMENT
	20	7	8	2	20	EXISTING EQUIPMENT
LIFE SAFETY LIGHTING	20	7	8	2	20	EXISTING EQUIPMENT
EXIT LIGHT	20	5	6	2	20	SPACE
HALLWAY LIGHT	20	11	12	2	20	SPACE
SPACE	20	13	14	2	20	SPACE
SPACE	20	15	16	2	20	SPACE
SPACE	20	17	18	2	20	SPACE

**(EXISTING) PANEL SCHEDULE**

PANEL BOARD 5EQL1 LOCATION ROOM A656A INSTALLATION SURFACE  
 RATINGS 100 AMPS 480 VOLTS 3 PH 4 WIRE 60 HZ GRD BAR  
 MAIN LUGS \_\_\_\_\_ CB INTERRUPTING RATING XXX RMS SYMM AMPS  
 MAIN CIRCUIT BREAKER 150 AMPS CONNECTED LOAD KW PANEL SIZE \_\_\_\_\_

DESCRIPTION	LOAD W-KW-HF	CB AMPS	CB IRR	ABC	CB LOAD W-KW-HF	DESCRIPTION
SPARE	60	3	4	2	20	SPARE
	8	1	1	2	20	EXHAUST FAN
	8	1	1	2	20	VAV
	8	1	1	2	20	A/C-B CONTROL
	8	1	1	2	20	A/C-C CONTROL
	11	1	1	2	20	CHILLER CONTROL
	13	1	1	2	20	SPARE
	15	1	1	2	20	SPARE
	17	1	1	2	20	SPARE
	19	1	1	2	20	SPARE
	21	1	1	2	20	SPARE
	23	1	1	2	20	SPARE
	25	1	1	2	20	SPARE
	27	1	1	2	20	SPARE
	29	1	1	2	20	SPARE

**(NEW) PANEL SCHEDULE**

PANEL BOARD 5C1-1 LOCATION ROOM A656A INSTALLATION SURFACE  
 RATINGS 225 AMPS 208 VOLTS 3 PH 4 WIRE 60 HZ GRD BAR  
 MAIN LUGS \_\_\_\_\_ CB INTERRUPTING RATING 22,000 RMS SYMM AMPS  
 MAIN CIRCUIT BREAKER 150 AMPS CONNECTED LOAD KW PANEL SIZE \_\_\_\_\_

DESCRIPTION	LOAD W-KW-HF	CB AMPS	CB IRR	ABC	CB LOAD W-KW-HF	DESCRIPTION
HEADWALL RECEPTACLES 5E506	20	1	1	2	20	HEADWALL RECEPTACLES 5E506
HEADWALL RECEPTACLES 5E506	20	3	4	2	20	HEADWALL RECEPTACLES 5E506
HEADWALL RECEPTACLES 5E507	20	5	6	2	20	HEADWALL RECEPTACLES 5E507
HEADWALL RECEPTACLES 5E507	20	7	8	2	20	HEADWALL RECEPTACLES 5E507
HEADWALL RECEPTACLES 5E508	20	9	10	2	20	HEADWALL RECEPTACLES 5E508
HEADWALL RECEPTACLES 5E508	20	11	12	2	20	HEADWALL RECEPTACLES 5E508
HEADWALL RECEPTACLES 5E509	20	13	14	2	20	HEADWALL RECEPTACLES 5E509
HEADWALL RECEPTACLES 5E509	20	15	16	2	20	HEADWALL RECEPTACLES 5E509
HEADWALL RECEPTACLES 5E510	20	17	18	2	20	HEADWALL RECEPTACLES 5E510
HEADWALL RECEPTACLES 5E510	20	19	20	2	20	HEADWALL RECEPTACLES 5E510
HEADWALL RECEPTACLES 5E511	20	21	22	2	20	HEADWALL RECEPTACLES 5E511
HEADWALL RECEPTACLES 5E511	20	23	24	2	20	HEADWALL RECEPTACLES 5E511
HEADWALL RECEPTACLES 5E512	20	25	26	2	20	HEADWALL RECEPTACLES 5E512
HEADWALL RECEPTACLES 5E512	20	27	28	2	20	HEADWALL RECEPTACLES 5E512
HEADWALL RECEPTACLES 5E513	20	29	30	2	20	HEADWALL RECEPTACLES 5E513
HEADWALL RECEPTACLES 5E513	20	31	32	2	20	HEADWALL RECEPTACLES 5E513
HEADWALL RECEPTACLES 5E514	20	33	34	2	20	HEADWALL RECEPTACLES 5E514
HEADWALL RECEPTACLES 5E514	20	35	36	2	20	HEADWALL RECEPTACLES 5E514
HEADWALL RECEPTACLES 5E515	20	37	38	2	20	HEADWALL RECEPTACLES 5E515
HEADWALL RECEPTACLES 5E515	20	39	40	2	20	HEADWALL RECEPTACLES 5E515
HEADWALL RECEPTACLES 5E516	20	41	42	2	20	HEADWALL RECEPTACLES 5E516

- DRAWING NOTES:**
- INSTALL ONE(1) NEW 480V, 3-POLE, 100 AMP. BREAKER IN POSITION 32,34,36 OF EXISTING PANELBOARD TO SUPPLY NEW PANELBOARD 5NB-E1. NEW BREAKER SHALL BE SAME TYPE AND HAVE SAME IC AS EXISTING UNITS.
  - FEEDERS, CONDUIT AND ELECTRICAL EQUIPMENT SHALL BE PROVIDED, INSTALLED AND WIRED BY THE AC UNIT MANUFACTURER.
  - INSTALL ONE(1) NEW 480V, 3-POLE, 100 AMP BREAKER IN POSITION 32,34,36 OF EXISTING PANELBOARD TO SUPPLY NEW PANELBOARD 5CH1-E1. NEW BREAKER SHALL BE EQUAL TO EXISTING UNITS.
  - INSTALL ONE (1) NEW MCC BUCKET WITH BREAKER TO SUPPLY NEW AHU CIRCUIT. BREAKER SHALL BE 200 MCA, 3-POLE, 480V.
  - INSTALL NEW BREAKER IN EXISTING PANELBOARD. NEW BREAKER SHALL BE SAME TYPE AND HAVE SAME IC RATING AS EXISTING UNITS.
  - TRANSFORMER SHALL BE 45KVA, 3-PHASE, 480-208/120V, 115 DEG C TEMPERATURE RISE, DRY-TYPE, NEMA 1 ENCLOSURE.
  - GROUND BUS BAR LOCATED IN ELECTRICAL ROOM 5E506.
  - THIS CIRCUIT BREAKER SHALL BE USED AS A REDUNDANT HEAT TRACE CONNECTION IN THE EVENT THE PRIMARY HEAT TRACE CONNECTION (SECL1-25) FAILS.

**(NEW) PANEL SCHEDULE**

PANEL BOARD 5NI-3 LOCATION ROOM 5E24 INSTALLATION SURFACE  
 RATINGS 100 AMPS 208 VOLTS 3 PH 4 WIRE 60 HZ GRD BAR  
 MAIN LUGS \_\_\_\_\_ CB INTERRUPTING RATING 22,000 RMS SYMM AMPS  
 MAIN CIRCUIT BREAKER 50 AMPS CONNECTED LOAD KW PANEL SIZE \_\_\_\_\_

DESCRIPTION	LOAD W-KW-HF	CB AMPS	CB IRR	ABC	CB LOAD W-KW-HF	DESCRIPTION
REC. SUPPLY 5E522	20	11	12	2	20	SPARE
REC. CLEAN 5E523	20	3	4	2	20	SPARE
REC. NURSE STATION 5E519	20	5	6	2	20	SPARE
REC. ELEC/CHEM 5E525E26	20	7	8	2	20	SPARE
REC. PATIENT RM 5E125E13	20	9	10	2	20	SPARE
SPACE	20	11	12	2	20	SPARE
SPACE	20	13	14	2	20	SPARE
SPACE	20	15	16	2	20	SPARE
SPACE	20	17	18	2	20	SPARE
SPACE	20	19	20	2	20	SPARE

**(NEW) PANEL SCHEDULE**

PANEL BOARD 5NB-E1 LOCATION ROOM 5E24 INSTALLATION SURFACE  
 RATINGS 225 AMPS 480 VOLTS 3 PH 4 WIRE 60 HZ GRD BAR  
 MAIN LUGS \_\_\_\_\_ CB INTERRUPTING RATING 14,200 RMS SYMM AMPS  
 MAIN CIRCUIT BREAKER 100 AMPS CONNECTED LOAD KW PANEL SIZE \_\_\_\_\_

DESCRIPTION	LOAD W-KW-HF	CB AMPS	CB IRR	ABC	CB LOAD W-KW-HF	DESCRIPTION
T-SN1	80	3	4	2	20	LIGHTING
	5	1	1	2	20	LIGHTING
SPARE	20	7	8	2	20	SPARE
SPARE	20	9	10	2	20	SPARE
SPARE	20	11	12	2	20	SPARE
SPARE	20	13	14	2	20	SPARE
SPARE	20	15	16	2	20	SPARE
SPARE	20	17	18	2	20	SPARE
SPARE	20	19	20	2	20	SPARE

**(NEW) PANEL SCHEDULE**

PANEL BOARD 5C1-2 LOCATION ROOM A656A INSTALLATION SURFACE  
 RATINGS 100 AMPS 208 VOLTS 3 PH 4 WIRE 60 HZ GRD BAR  
 MAIN LUGS \_\_\_\_\_ CB INTERRUPTING RATING 22,000 RMS SYMM AMPS  
 MAIN CIRCUIT BREAKER 100 AMPS CONNECTED LOAD KW PANEL SIZE \_\_\_\_\_

DESCRIPTION	LOAD W-KW-HF	CB AMPS	CB IRR	ABC	CB LOAD W-KW-HF	DESCRIPTION
HEADWALL RECEPTACLES 5E509	20	1	1	2	20	REC. NURSE STATION 5E518
HEADWALL RECEPTACLES 5E509	20	3	4	2	20	REC. CORRIDOR 5E541
HEADWALL RECEPTACLES 5E508	20	5	6	2	20	REC. CONFERENCE 5E530
HEADWALL RECEPTACLES 5E508	20	7	8	2	20	REC. NURSE STATION 5E527
HEADWALL RECEPTACLES 5E507	20	9	10	2	20	REC. NURSE STATION 5E527
HEADWALL RECEPTACLES 5E507	20	11	12	2	20	REC. OMCCELL 5E542
HEADWALL RECEPTACLES 5E506	20	13	14	2	20	REC. ICE MACH/REF 5E543
HEADWALL RECEPTACLES 5E506	20	15	16	2	20	REC. OMCCELL 5E541
HEADWALL RECEPTACLES 5E505	20	17	18	2	20	REC. PATIENT RM 5E502
HEADWALL RECEPTACLES 5E505	20	19	20	2	20	REC. OMCCELL 5E543
HEADWALL RECEPTACLES 5E504	20	21	22	2	20	REC. PATIENT RM 5E508
HEADWALL RECEPTACLES 5E504	20	23	24	2	20	REC. PATIENT LIFTER 5E512
HEADWALL RECEPTACLES 5E503	20	25	26	2	20	REC. PATIENT LIFTER 5E512
HEADWALL RECEPTACLES 5E503	20	27	28	2	20	REC. PATIENT LIFTER 5E512
HEADWALL RECEPTACLES 5E502	20	29	30	2	20	REC. PATIENT LIFTER 5E512
HEADWALL RECEPTACLES 5E502	20	31	32	2	20	REC. PATIENT LIFTER 5E512
HEADWALL RECEPTACLES 5E501	20	33	34	2	20	REC. PATIENT LIFTER 5E512
HEADWALL RECEPTACLES 5E501	20	35	36	2	20	REC. PATIENT LIFTER 5E512
HEADWALL RECEPTACLES 5E501	20	37	38	2	20	REC. PATIENT LIFTER 5E512
HEADWALL RECEPTACLES 5E501	20	39	40	2	20	REC. PATIENT LIFTER 5E512
HEADWALL RECEPTACLES 5E501	20	41	42	2	20	REC. PATIENT LIFTER 5E512

100% SUBMITAL  
 BID SET -  
 CONSTRUCTION  
 DOCUMENTS  
 DATE: DECEMBER, 21 2012

BID SET - 100% CONSTRUCTION DOCUMENTS

FULLY SPRINKLERED

**O BRIEN & GERE**

12-31-12

BY \_\_\_\_\_ REVISIONS \_\_\_\_\_ DATE \_\_\_\_\_

**CONFIDENTIAL** THESE DRAWINGS MUST BE RETURNED TO FACILITIES MANAGEMENT SERVICE, PROJECT SECTION, UPON COMPLETION, OR FINAL USE BY THE CONTRACTOR FOR BIDDING PURPOSES.

ASBESTOS WARNING: ASBESTOS CONTAINING BUILDING MATERIALS (ACBM) ARE PRESENT THROUGHOUT THE FACILITY. IF CONTRACTORS FIND ACBM, OR SUSPECT FINDING ACBM, THEY SHALL IMMEDIATELY STOP WORK AND CONTACT THE PROJECT COTR.

SCALING NOTES: FULL SIZE VA, T-1 SHEETS (SCALE AS INDICATED) AND HALF SIZE VA, T-0 SHEETS (G SCALE INDICATED LETTER SIZE DRAWINGS ARE NOT TO SCALE).

GENERAL NOTE: CONTRACTORS AND ARCHITECT/ENGINEERING FIRMS ARE RESPONSIBLE FOR THE FIELD VERIFICATION OF ALL EXISTING CONDITIONS.

Project Title  
**RENOVATE  
 WARD 5 EAST**

Drawing Title  
**FIFTH FLOOR - WARD EAST  
 ELEC. SCHEDULES, SINGLE  
 LINE & CONTROL DIAGRAMS**

Building Number 47  
 Location ASHEVILLE, NC

Date 12/21/12  
 Project No. 637-11-119  
 Checked JMA  
 Draw MSMS  
 DRAWING NO. E601  
 Dwg 71 of 78

Office of Facilities  
 University of North Carolina