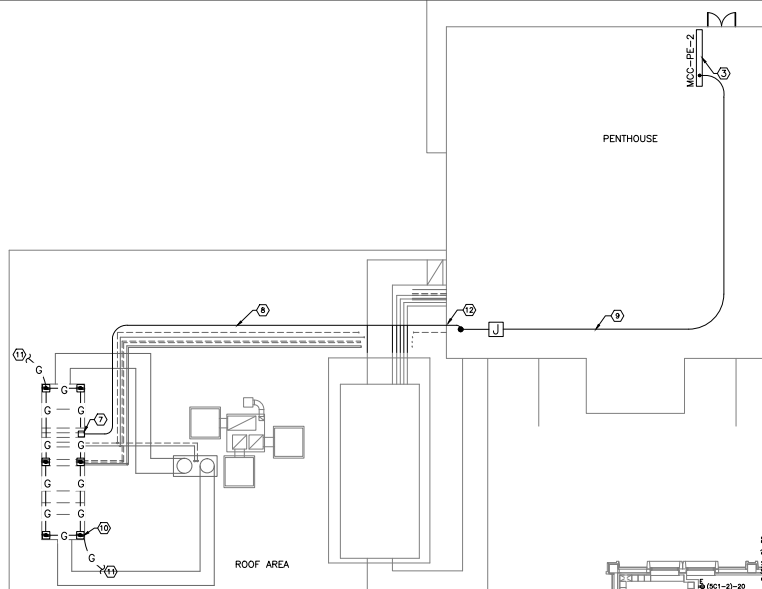
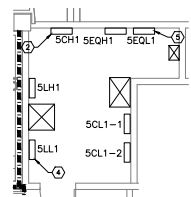


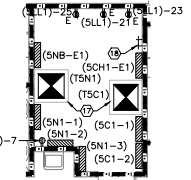
ONE-FOURTH INCH = ONE FOOT
 ONE-QUARTER INCH = ONE FOOT
 THREE-EIGHTS INCH = ONE FOOT
 ONE-HALF INCH = ONE FOOT
 THREE-QUARTERS INCH = ONE FOOT
 ONE INCH = ONE FOOT
 ONE AND ONE-HALF INCHES = ONE FOOT
 THREE INCHES = ONE FOOT



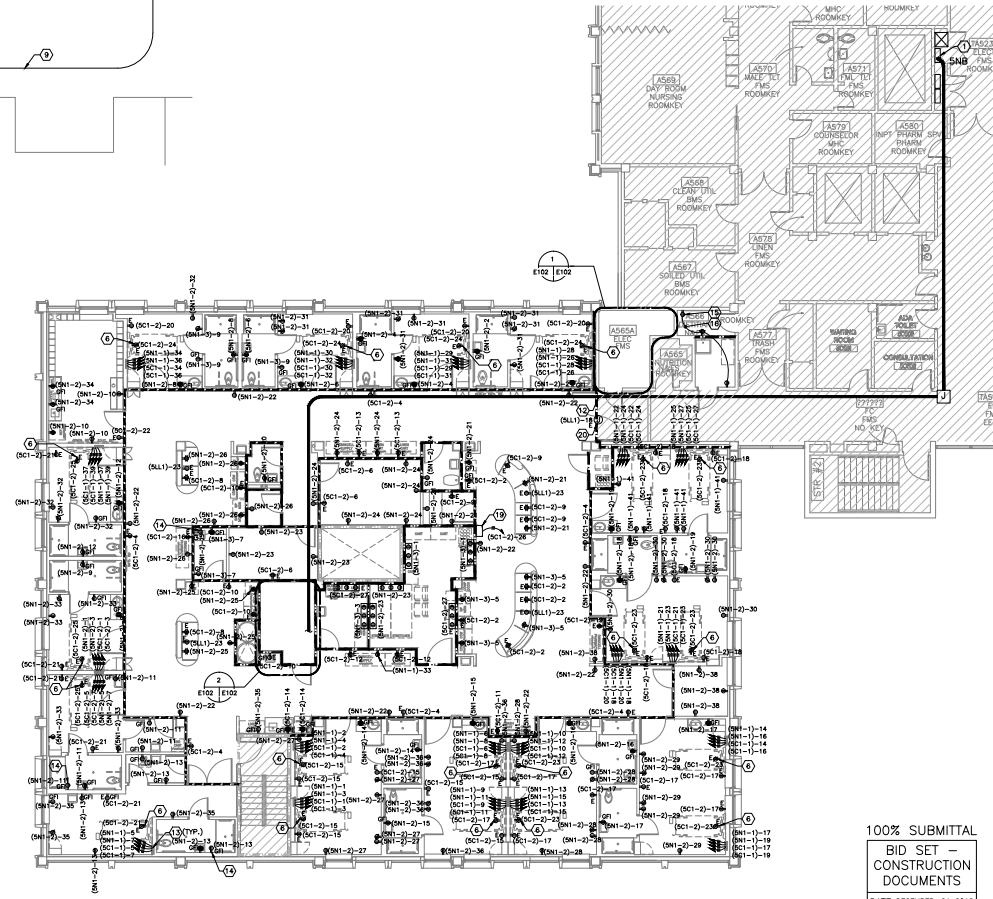
PARTIAL ROOF AREA AND PENTHOUSE POWER PLAN
 SCALE: 3/32" = 1'-0"



ELECTRICAL ROOM A565A ENLARGEMENT
 E102/E102 SCALE: 3/8" = 1'-0"



ELECTRICAL ROOM 5E524 ENLARGEMENT
 E102/E102 SCALE: 1/4" = 1'-0"



PARTIAL 5TH FLOOR POWER PLAN
 SCALE: 1/8" = 1'-0"

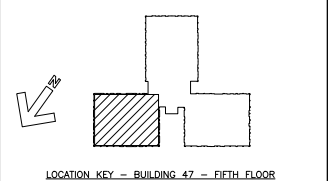
- WALL LEGEND**
- SMOKE RESISTIVE, POSITIVE LATCHING
 - SMOKE PARTITION (HAZARDOUS), 3/4 HR. LBL.
 - SMOKE BARRIER (1 HOUR FIRE RESISTANCE RATED), 3/4 HR. LBL. HOLD OPENS
 - 1-HOUR FIRE RESISTANCE RATED BARRIER (HAZ.), 3/4 HR. LBL. CLOSER
 - EXISTING TO REMAIN 2-HOUR FIRE RATED

GENERAL NOTES :

1. THE CONTRACTOR IS RESPONSIBLE FOR ALL CONDUIT, WIRING, ETC. NECESSARY FOR VAV POWER AND CONTROLS AS DESCRIBED IN THE MECHANICAL DRAWINGS.
- ① **DRAWING NOTES :**
1. USE THIS PANELBOARD AS POINT OF CONNECTION FOR NEW PANELBOARD 5NB-E1, SEE SINGLE LINE DIAGRAM AND PANELBOARD SCHEDULE ON DRAWING E601.
2. USE THIS PANELBOARD AS POINT OF CONNECTION FOR NEW PANELBOARD 5CH1-E1, SEE SINGLE LINE DIAGRAM AND PANELBOARD SCHEDULE ON DRAWING E601.
3. USE THIS MCC AS POINT OF CONNECTION FOR NEW AC-1, SEE MCC ELEVATION ON DRAWING E601.
4. USE THIS PANELBOARD AS POINT OF CONNECTION FOR LIFE SAFETY EMERGENCY LOADS SERVED AT 120V. SEE PANELBOARD SCHEDULE ON DRAWING E601.
5. USE THIS PANELBOARD AS POINT OF CONNECTION FOR CRITICAL EQUIPMENT LOADS SERVED @208/120V. SEE PANELBOARD SCHEDULE ON DRAWING E601.
6. PATIENT BED RECEPTACLE LOCATED ABOVE CEILING. COORDINATE EXACT LOCATION OF RECEPTACLE WITH PATIENT BED LIFT MANUFACTURER.
7. COORDINATE ACTUAL POINT OF CONNECTION OF NEW FEEDER WITH AC UNIT VENDOR DRAWINGS. SEE AC UNIT POWER RISER DIAGRAM ON DWG E601.
8. SUPPORT CONDUITS ALONG NEW PIPE RACK WITH HOT DIPPED GALVANIZED CONDUIT CLAMPS. SEE DETAIL 2 ON DRAWING E602.
9. SUPPORT CONDUITS INSIDE PENTHOUSE AREA AS PER DETAIL #3 ON DRAWING E602 COORDINATE ACTUAL ROUTING IN THE FIELDS WITH EXISTING MECHANICAL AND ELECTRICAL TRADES.
10. LIGHTNING PROTECTION SYSTEM. SEE INSTALLATION DETAIL #1 ON DRAWING E602.
11. CONNECT TO EXISTING LIGHTNING PROTECTION SYSTEM IN THE AREA.
12. PROVIDE FIRE STOPPING FOR NEW WALL CONDUIT PENETRATION.
13. CONDUITS TURNING DOWN TO NEW HEADWALL SYSTEM. COORDINATE EXACT LOCATION WITH ARCH. DRAWINGS.
14. PROVIDE RECEPTACLE FOR AUTO SENSOR FAUCET BELOW SINK.
15. EXISTING RECEPTACLE TO REMAIN.
16. CONNECT NEW RECEPTACLE TO EXISTING 120V RECEPTACLE CIRCUIT IN AREA.
17. PROVIDE 4" CONCRETE HOUSEKEEPING PAD. PROVIDE NEOPRENE TYPE PAD FOR TRANSFORMER VIBRATION ISOLATION.
18. GROUND BUS BAR. SEE DRAWING E602 FOR MORE INFORMATION.
19. MED GAS ALARM PANEL. COORDINATE LOCATION OF PANEL WITH MECHANICAL CONTRACTOR.
20. PROVIDE 120V CONNECTION FOR AUTOMATIC DOOR. SEE DRAWING E103 FOR MORE INFORMATION.

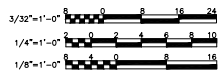
LEGEND

DENOTES EXISTING AREA NOT IN CONTRACT.



BID SET - 100% CONSTRUCTION DOCUMENTS
 FULLY SPRINKLERED

100% SUBMITTAL
 BID SET -
 CONSTRUCTION
 DOCUMENTS
 DATE: DECEMBER, 21 2012



| BY | REVISIONS | DATE |
|----|-----------|------|
| | | |
| | | |
| | | |
| | | |
| | | |



CONFIDENTIAL THESE DRAWINGS MUST BE RETURNED TO FACILITIES MANAGEMENT SERVICE, PROJECT SECTION, UPON COMPLETION, OR FINAL USE BY THE CONTRACTOR FOR BIDDING PURPOSES.

ASBESTOS WARNING: ASBESTOS CONTAINING BUILDING MATERIALS (ACBM) ARE PRESENT THROUGHOUT THE FACILITY. IF CONTRACTORS FIND ACBM, OR SUSPECT FINDING ACBM, THEY SHALL IMMEDIATELY STOP WORK AND CONTACT THE PROJECT COTR.

SCALING NOTES: FULL SIZE V.A. "T" SHEETS (SCALE AS INDICATED) AND HALF SIZE V.A. "D" SHEETS (3/4 OF THE SCALE INDICATED LETTER SIZE DRAWINGS ARE NOT TO SCALE.

GENERAL NOTE: CONTRACTORS AND ARCHITECT/ENGINEERING FIRMS ARE RESPONSIBLE FOR THE FIELD VERIFICATION OF ALL EXISTING CONDITIONS.

Project Title
**RENOVATE
 WARD 5 EAST**

Drawing Title
**FIFTH FLOOR - WARD EAST
 ELECTRICAL POWER PLAN**

Building Number
47

Location
ASHEVILLE, NC

Date
12/21/12

Project No.
637-11-119

Checked
JMA

Drawn
MSMS

DRAWING NO.
E102

Dwg 69 Of 78

