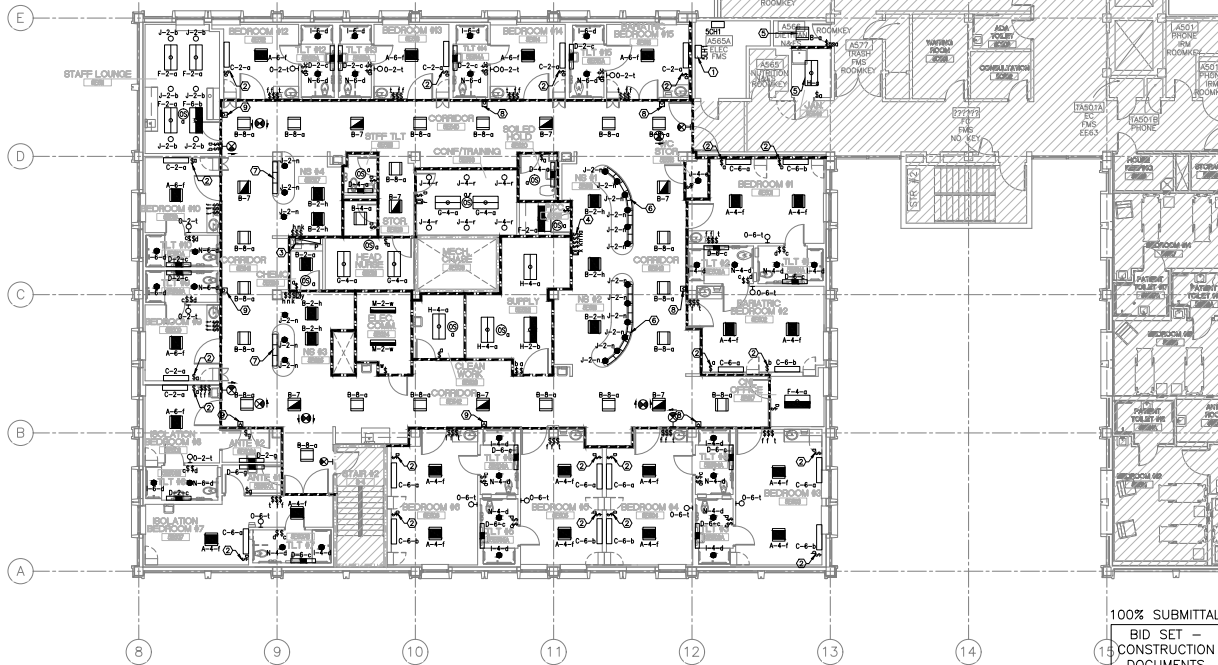


LIGHT FIXTURE SCHEDULE

TYPE	LAMP TYPE	NO. OF LAMPS	MOUNTING	LAMP WATTAGE	VOLTAGE	FIXTURE SIZE & DESCRIPTION	REMARKS
A	2', FLUORESCENT, TB	4	CEILING, GRID MOUNTED	17W	277VAC	LITHONIA # 2V7B	DIRECT/INDIRECT, VOLUMETRIC LIGHTING FIXTURE. PROVIDE 2 BALLAST FOR DOUBLE SWITCHING.
B	2', FLUORESCENT, TB	4	CEILING, GRID MOUNTED	17W	277VAC	LITHONIA # 2V7B	DIRECT/INDIRECT, VOLUMETRIC LIGHTING FIXTURE
C	4', FLUORESCENT, TB	3	WALL, SURFACE MOUNTED @ 6' AFF	28W	277VAC	HILL-ROM # P005195A	4' PATENT RED READING LIGHTING FIXTURE. PROVIDE MULTIPLE SWITCHING. SWITCHING SHALL BE LOCATED AT HEADWALL SYSTEM. 2 DOWN LAMPS, 1 UP LAMP.
D	2', FLUORESCENT, TB	2	WALL, SURFACE MOUNTED @ 3" ABOVE MIRROR	17W	277VAC	LITHONIA # W217	2' LIGHTING FIXTURE, UP/DOWN ILLUMINATION
E	NOT USED						
F	4', FLUORESCENT, TB	2	CEILING, GRID MOUNTED	28W	277VAC	LITHONIA # 2AVG	2'x4' DIRECT/INDIRECT, VOLUMETRIC LIGHTING FIXTURE
G	4', FLUORESCENT, TB	2	CEILING, GRID MOUNTED	28W	277VAC	LITHONIA # 2AVG	2'x4' DIRECT/INDIRECT, VOLUMETRIC LIGHTING FIXTURE
H	4', FLUORESCENT, TB	3	CEILING, GRID MOUNTED	28W	277VAC	LITHONIA # 2GTB	2'x4' LIGHTING FIXTURE
I	LED TYPE	1	CEILING, GRID MOUNTED	28W	277VAC	LITHONIA # L7XL02T24	DOWN LIGHT, PROVIDED WITH MATE WHITE REFLECTOR. WET LOCATION LISTED.
J	DIT, COMPACT FLUORESCENT	1	CEILING, GRID MOUNTED	26W	277VAC	LITHONIA # LFFN	DOWN LIGHT, PROVIDED WITH WHITE REFLECTOR. DIMMABLE.
K	A19, INCANDESCENT	2	WALL, SURFACE MOUNTED	40W	120VAC	MURRY FEISS #M1282C82	WALL SCONCE. PROVIDE SAME FINISH AS EXISTING. MOUNT WIND AREA SCONCES. MOUNTED @ 7'6" TO CENTER.
L	LED	1	SURFACE ON DESK (SEE ARCH. DWG FOR DETAIL)	120VAC		AMERICAN LIGHTING #A-LED-04	CONTINUOUS ROPE LIGHTING CUT TO FIT SPACE.
M	4FT, FLUORESCENT, TB	2	SURFACE, PENDANT MOUNTED @ 6" AFF	28W	277VAC	LITHONIA # L3324V	
N	DIT, COMPACT FLUORESCENT	2	CEILING, GRID MOUNTED	26W	277VAC	LITHONIA # LFFN	DOWN LIGHT, PROVIDED WITH WHITE REFLECTOR.
O	LOW VOLTAGE, WHITE LED	1	WALL, SEMI-FLUSH MOUNTED	3W	277VAC	ALKOO # WQ2V	WHITE FINISHED HOUSING MOUNTED @ 18" AFF.
P	4FT, FLUORESCENT, TB	1	SURFACE MOUNTED, UNDERCABINET	28W	120VAC	LITHONIA #UC-32-120-SBR	UNDER CABINET MOUNTED



PARTIAL 5TH FLOOR LIGHTING PLAN
SCALE: 1/8" = 1'-0"

GENERAL NOTES:

- CONNECT NORMAL POWER LIGHTING CIRCUITS TO PANEL 5NB-E1 UNLESS OTHERWISE NOTED. SEE PANEL SCHEDULE ON DRAWING E601.
- CONNECT CRITICAL BRANCH LIGHTING CIRCUITS TO PANEL 5CH1-E1 UNLESS OTHERWISE NOTED. SEE PANEL SCHEDULE ON DRAWING E601.
- CONTRACTOR SHALL COORDINATE CEILING TYPES WITH ARCHITECTURAL REFLECTED CEILING PLAN. PROVIDE FRAME-IN KIT SUITABLE FOR LIGHTING FIXTURES INSTALLED IN GYPSUM CEILINGS.

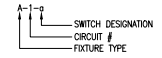
DRAWING NOTES:

- USE THIS PANELBOARD AS POINT OF CONNECTION FOR NEW LIGHTING CIRCUITS WHICH WILL BE CONNECTED TO THE LIFE SAFETY SYSTEM. SEE PANELBOARD SCHEDULE ON DRAWING E601.
- LIGHT SWITCH TO BE PROVIDED IN PATIENT HEADWALL SYSTEM.
- CONNECT TO NEAREST NORMAL POWER 120V RECEPTACLE CIRCUIT.
- LIGHT SWITCH SHALL CONTROL CORRIDOR LIGHTING FIXTURES WITH SWITCH DESIGNATOR "C".
- CONNECT TO NEAREST EXISTING 277V NORMAL POWER LIGHTING CIRCUIT IN AREA.
- LIGHTING FIXTURE "L". CONNECT TO PANEL 5N1-2, CIRCUIT 37. FIXTURE SHALL BE CONTROLLED BY SWITCH WITH "L" DESIGNATOR LOCATED IN NURSE STATION #1 AND #2.
- LIGHTING FIXTURE "1". CONNECT TO PANEL 5N1-2, CIRCUIT 39. FIXTURE SHALL BE CONTROLLED BY SWITCH WITH "1" DESIGNATOR LOCATED IN NURSE STATION #3 AND #4.
- LIGHTING FIXTURE "C". CONNECT TO PANEL 5N1-2, CIRCUIT 40. FIXTURE SHALL BE CONTROLLED BY SWITCH WITH "C" DESIGNATOR LOCATED IN NURSE STATION #1.
- LIGHTING FIXTURE "Y". CONNECT TO PANEL 5N1-2, CIRCUIT 42. FIXTURE SHALL BE CONTROLLED BY SWITCH WITH "Y" DESIGNATOR LOCATED IN NURSE STATION #3.

LEGEND

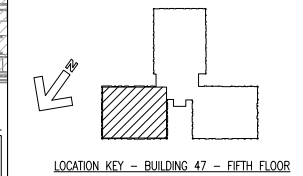
DENOTES EXISTING AREA NOT IN CONTRACT.

LIGHTING FIXTURE CIRCUIT LEGEND



WALL LEGEND

- SMOKE RESISTIVE, POSITIVE LATCHING
- SMOKE PARTITION (HAZARDOUS), 1/2 HR. LBL, CLOSER
- SMOKE BARRIER (1 HOUR FIRE RESISTANCE RATED), 1/2 HR. LBL, HOLD OPENS
- 1-HOUR FIRE RESISTANCE RATED BARRIER (HAZ.), 1/2 HR. LBL, CLOSER
- EXISTING TO REMAIN 2-HOUR FIRE RATED



100% SUBMITTAL
BID SET -
CONSTRUCTION
DOCUMENTS
DATE: DECEMBER, 21 2012

1/8" = 1'-0" 16

BID SET - 100% CONSTRUCTION DOCUMENTS

FULLY SPRINKLERED

BY	REVISIONS	DATE



CONFIDENTIAL: THESE DRAWINGS MUST BE RETURNED TO FACILITIES MANAGEMENT SERVICE, PROJECT SECTION, UPON COMPLETION, OR FINAL USE BY THE CONTRACTOR FOR RECORD PURPOSES.

ASBESTOS WARNING: ASBESTOS CONTAINING BUILDING MATERIALS (ACBM) ARE PRESENT THROUGHOUT THE FACILITY. IF CONTRACTORS FIND ACBM, OR SUSPECT FINDING ACBM, THEY SHALL IMMEDIATELY STOP WORK AND CONTACT THE PROJECT COOR.

SCALING NOTES: FULL SIZE V.A. 1" = 3" SHEETS (SCALE AS INDICATED) AND HALF SIZE V.A. 1/2" SHEETS @ THE SCALE INDICATED LETTER SIZE DRAWINGS ARE NOT TO SCALE.

GENERAL NOTE: CONTRACTORS AND ARCHITECT/ENGINEERING FIRMS ARE RESPONSIBLE FOR THE FIELD VERIFICATION OF ALL EXISTING CONDITIONS.

Project Title
**RENOVATE
WARD 5 EAST**

Drawing Title FIFTH FLOOR - WARD EAST LIGHTING PLANS AND LIGHTING FIXTURE SCHEDULE	Date 12/21/12
Building Number 47	Checked JMA
Location ASHEVILLE, NC	Drawn MSMS

Project No. 637-11-119	DRAWING NO. E101
Dwg 68 OF 78	

