

- NOTES:
1. PLACE AT ALL EXIT ACCESS STAIRS
 2. PROVIDE APPROPRIATE BRAILLE LETTERING
 3. SEE MOUNTING DETAIL THIS SHEET
 4. SIZE: 7"x7"
 5. COLOR TO MATCH EXISTING

A FIRE EXIT SIGN
SCALE: NONE



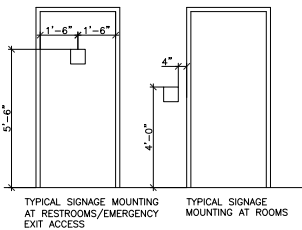
- NOTES:
1. PLACE AT ALL PRIVATE OFFICES
 2. PROVIDE APPROPRIATE BRAILLE LETTERING
 3. SEE MOUNTING DETAIL THIS SHEET
 4. SIZE: 7"x7"
 5. COLOR AS SPECIFIED
 6. SIGN SHALL HAVE BRAILLE WINDOW
 7. SIGN SHALL HAVE AN INTERCHANGABLE INSERT

B TYPICAL ROOM SIGN



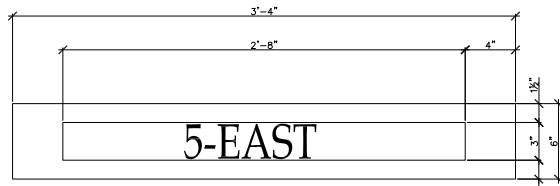
- NOTES:
1. PLACE AT PUBLIC ADA HANDICAP ACCESSIBLE RESTROOM
 2. PROVIDE APPROPRIATE BRAILLE LETTERING
 3. SEE MOUNTING DETAIL THIS SHEET
 4. SIZE: 7"x7"
 5. COLOR TO MATCH EXISTING

C TYPICAL TOILET SIGN

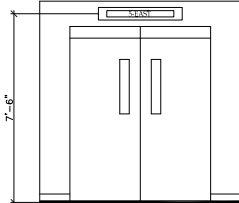


INTERIOR SIGNAGE

A-603 SCALE: 1/2"=1'-0"



- NOTE:
1. SIGN TYPE IN18.2(SIM.) PER VA STANDARDS
 2. SIGN TO BE CENTERED OVER AND ABOVE DOOR



ENLARGED ENTRANCE SIGN DETAIL

A-603 SCALE: 1/4"=1'-0"

SIGNAGE SCHEDULE

ROOM NO.	ROOM NAME	TYPE	SIZE	MATERIALS	REMARKS
SE501	BEDROOM #1	B	7"x7"	MATCH EXIST.	-
SE501A	TOILET #1	C	7"x7"	MATCH EXIST.	-
SE502	BIARIATRIC BEDROOM #2	B	7"x7"	MATCH EXIST.	-
SE502A	TOILET #2	C	7"x7"	MATCH EXIST.	-
SE503	BEDROOM #3	B	7"x7"	MATCH EXIST.	-
SE503A	TOILET #3	C	7"x7"	MATCH EXIST.	-
SE504	BEDROOM #4	B	7"x7"	MATCH EXIST.	-
SE504A	TOILET #4	C	7"x7"	MATCH EXIST.	-
SE505	BEDROOM #5	B	7"x7"	MATCH EXIST.	-
SE505A	TOILET #5	C	7"x7"	MATCH EXIST.	-
SE506	BEDROOM #6	B	7"x7"	MATCH EXIST.	-
SE506A	TOILET #6	C	7"x7"	MATCH EXIST.	-
SE507	ISOLATION BEDROOM #7	B	7"x7"	MATCH EXIST.	-
SE507A	ANTE #1	B	7"x7"	MATCH EXIST.	-
SE507B	TOILET #7	C	7"x7"	MATCH EXIST.	-
SE508	ISOLATION BEDROOM #8	B	7"x7"	MATCH EXIST.	-
SE508A	ANTE #2	B	7"x7"	MATCH EXIST.	-
SE508B	TOILET #8	C	7"x7"	MATCH EXIST.	-
SE509	BEDROOM #9	B	7"x7"	MATCH EXIST.	-
SE509A	TOILET #9	C	7"x7"	MATCH EXIST.	-
SE510	BEDROOM #10	B	7"x7"	MATCH EXIST.	-
SE510A	TOILET #10	C	7"x7"	MATCH EXIST.	-
SE511	STAFF LOUNGE	B	7"x7"	MATCH EXIST.	-
SE512	BEDROOM #12	B	7"x7"	MATCH EXIST.	-
SE512A	TOILET #12	C	7"x7"	MATCH EXIST.	-
SE513	BEDROOM #13	B	7"x7"	MATCH EXIST.	-
SE513A	TOILET #13	C	7"x7"	MATCH EXIST.	-
SE514	BEDROOM #14	B	7"x7"	MATCH EXIST.	-
SE514A	TOILET #14	C	7"x7"	MATCH EXIST.	-
SE515	BIARIATRIC BEDROOM #15	B	7"x7"	MATCH EXIST.	-
SE515A	TOILET #15	C	7"x7"	MATCH EXIST.	-
SE516	W/ STORAGE	B	7"x7"	MATCH EXIST.	-
SE517	CNL OFFICE	B	7"x7"	MATCH EXIST.	-
SE518	NURSE STATION #1	-	-	-	-
SE519	NURSE STATION #2	-	-	-	-
SE520	SOILED HOLD	B	7"x7"	MATCH EXIST.	-
SE521	FCC OFFICE	B	7"x7"	MATCH EXIST.	-
SE522	SUPPLY	B	7"x7"	MATCH EXIST.	-
SE523	CLEAN WORK	B	7"x7"	MATCH EXIST.	-
SE524	ELEC./COMM.	B	7"x7"	MATCH EXIST.	-
SE525	NURSE STATION #3	-	-	-	-
SE526	CHEMOTHERAPY	B	7"x7"	MATCH EXIST.	-
SE527	NURSE STATION #4	-	-	-	-
SE528	STAFF TOILET	C	7"x7"	MATCH EXIST.	-
SE529	STORAGE	B	7"x7"	MATCH EXIST.	-
SE530	CONFERENCE/TRAINING	B	7"x7"	MATCH EXIST.	-
SE531	NURSE MANGER OFFICE	B	7"x7"	MATCH EXIST.	-
SE540	CORRIDOR	-	-	-	-
SE541	CORRIDOR	-	-	-	-
SE542	CORRIDOR	-	-	-	-
SE543	CORRIDOR	-	-	-	-
SE544	HAC	B	7"x7"	MATCH EXIST.	-
S-4	STAIR #2	A	7"x7"	MATCH EXIST.	-

NOTE:
SIGNAGE SHOWN FOR DESIGN INTENT ONLY.
CONTRACTOR SHALL COORDINATE FINAL PACKAGE WITH VA/COR INCLUDING ROOM NAME, TYPE, SIZE AND MATERIAL, ETC. CONTRACTOR SHALL REFER TO WARD 5 WEST FOR EXAMPLES OF EXISTING SIGNAGE TO MATCH TYPE, SIZE, MATERIAL, FONT, MOUNT TYPE, ETC.

100% SUBMITTAL
BID SET -
CONSTRUCTION
DOCUMENTS
DATE: DECEMBER, 21 2012

BID SET - 100% CONSTRUCTION DOCUMENTS



FULLY SPRINKLERED

BY	REVISIONS	DATE

LINDBERGH & ASSOCIATES, LLC
2170 Ashley Phosphate Road - Suite 504
Charleston, South Carolina, 29406
Phone: (843)553-6670 Fax: (843)553-0755



CONFIDENTIAL THESE DRAWINGS MUST BE RETURNED TO FACILITIES MANAGEMENT SERVICE, PROJECT SECTION, UPON COMPLETION, OR FINAL USE BY THE CONTRACTOR FOR BIDDING PURPOSES.
ASBESTOS WARNING: ASBESTOS CONTAINING BUILDING MATERIALS (ACBM) ARE PRESENT THROUGHOUT THE FACILITY. IF CONTRACTORS FIND ACBM, OR SUSPECT FINDING ACBM, THEY SHALL IMMEDIATELY STOP WORK AND CONTACT THE PROJECT COR.

SCALING NOTES: FULL SIZE V.A. "T" SHEETS (SCALE AS INDICATED) AND HALF SIZE V.A. "D" SHEETS (@ THE SCALE INDICATED LETTER SIZE DRAWINGS ARE NOT TO SCALE.

GENERAL NOTE: CONTRACTORS AND ARCHITECT/ENGINEERING FIRMS ARE RESPONSIBLE FOR THE FIELD VERIFICATION OF ALL EXISTING CONDITIONS.

Project Title
**RENOVATE
WARD 5 EAST**

Drawing Title FIFTH FLOOR - WARD EAST	Date 12/21/12
Project No. 637-11-119	
SIGNAGE SCHEDULE	
Building Number 47	Checked JSA
Location ASHEVILLE, NC	Draw PFF
DRAWING NO. A-602	
Dwg 35 OF 78	

