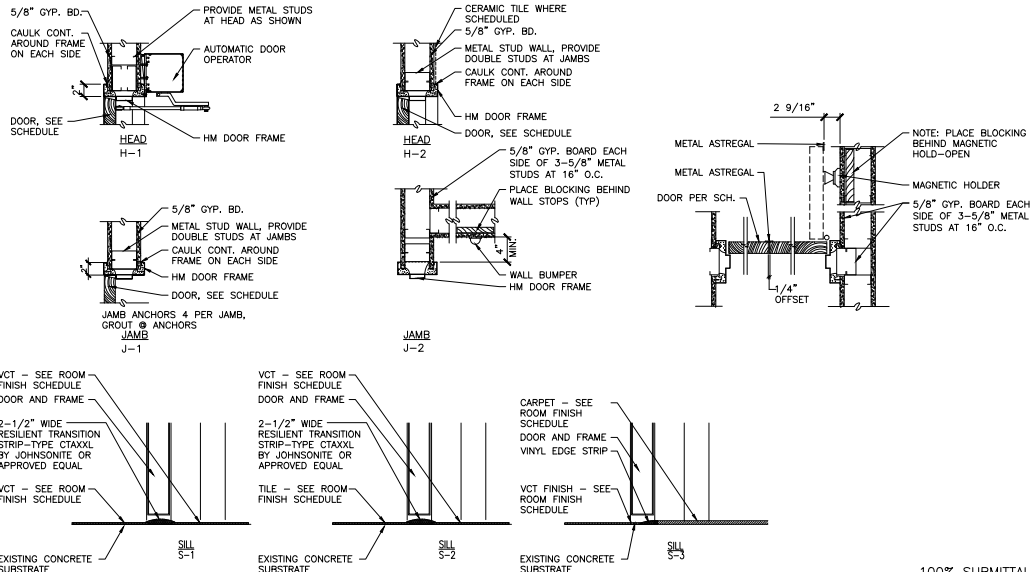


A THREE INCHES = ONE FOOT
 B ONE AND ONE-HALF INCHES = ONE FOOT
 C ONE INCH = ONE FOOT
 D THREE-QUARTERS INCH = ONE FOOT
 E ONE-HALF INCH = ONE FOOT
 F THREE-FIFTHS INCH = ONE FOOT
 G ONE-FOURTH INCH = ONE FOOT

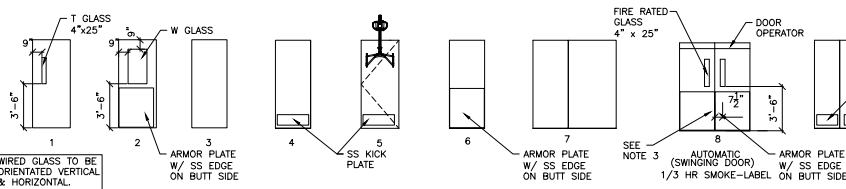
DOOR SCHEDULE

ROOM NO.	DOOR NO.	DOOR SIZE	DOOR TYPE	DOOR MATERIAL	HARDWARE SET NO.	FRAME MATL. ELEV.	DETAILS JAMB SILL	LABEL	REMARKS	DOOR NO.
5E501	5E501A	4'-0"x7'-0"	6	WOOD	1A	HM	1 H-2 J-2 S-1			5E501A
5E501A	5E501AA	3'-0"x7'-0"	5	WOOD	2B	HM	3 H-2 J-1 S-2			5E501AA
5E502	5E502A	4'-0"x7'-0"	6	WOOD	1A	HM	1 H-2 J-1 S-1			5E502A
5E502A	5E502AA	4'-0"x7'-0"	5	WOOD	2A	HM	3 H-2 J-1 S-2			5E502AA
5E503	5E503A	4'-0"x7'-0"	6	WOOD	1A	HM	1 H-2 J-2 S-1			5E503A
5E503A	5E503AA	3'-0"x7'-0"	5	WOOD	2B	HM	3 H-2 J-1 S-2			5E503AA
5E504	5E504A	4'-0"x7'-0"	6	WOOD	1A	HM	1 H-2 J-1 S-1			5E504A
5E504A	5E504AA	3'-0"x7'-0"	5	WOOD	2B	HM	3 H-2 J-2 S-2			5E504AA
5E505	5E505A	4'-0"x7'-0"	6	WOOD	1A	HM	1 H-2 J-1 S-1			5E505A
5E505A	5E505AA	3'-0"x7'-0"	5	WOOD	2B	HM	3 H-2 J-1 S-2			5E505AA
5E506	5E506A	4'-0"x7'-0"	6	WOOD	1A	HM	1 H-2 J-1 S-1			5E506A
5E506A	5E506AA	3'-0"x7'-0"	5	WOOD	2B	HM	3 H-2 J-1 S-2			5E506AA
5E507	5E507A	3'-0"x7'-0"	7	WOOD	1B	HM	2 H-2 J-1 S-1	CLOSER		5E507A
5E507A	5E507AA	3'-0"x7'-0"	2	WOOD	8	HM	1 H-2 J-2 S-2	CLOSER		5E507AA
5E507A	5E507AB	3'-0"x7'-0"	2	WOOD	8	HM	1 H-2 J-2 S-1	CLOSER		5E507AB
5E507B	5E507BA	3'-0"x7'-0"	5	WOOD	2B	HM	3 H-2 J-1 S-2			5E507BA
5E508	5E508A	4'-0"x7'-0"	6	WOOD	1A	HM	1 H-2 J-1 S-1	CLOSER		5E508A
5E508A	5E508AA	3'-0"x7'-0"	2	WOOD	8	HM	1 H-2 J-2 S-1	CLOSER		5E508AA
5E508A	5E508AB	3'-0"x7'-0"	2	WOOD	8	HM	1 H-2 J-1 S-1	CLOSER		5E508AB
5E508B	5E508BA	3'-0"x7'-0"	5	WOOD	2B	HM	3 H-2 J-1 S-2			5E508BA
5E509	5E509A	4'-0"x7'-0"	6	WOOD	1A	HM	1 H-2 J-1 S-1			5E509A
5E509A	5E509AA	3'-0"x7'-0"	5	WOOD	2B	HM	3 H-2 J-1 S-2			5E509AA
5E510	5E510A	4'-0"x7'-0"	6	WOOD	1A	HM	1 H-2 J-1 S-1			5E510A
5E510A	5E510AA	3'-0"x7'-0"	5	WOOD	2B	HM	3 H-2 J-1 S-2			5E510AA
5E511	5E511A	3'-0"x7'-0"	1	WOOD	6	HM	1 H-2 J-1 S-1			5E511A
5E512	5E512A	4'-0"x7'-0"	6	WOOD	1A	HM	1 H-2 J-1 S-1			5E512A
5E512A	5E512AA	3'-0"x7'-0"	5	WOOD	2B	HM	3 H-2 J-1 S-2			5E512AA
5E513	5E513A	4'-0"x7'-0"	6	WOOD	1A	HM	1 H-2 J-1 S-1			5E513A
5E513A	5E513AA	3'-0"x7'-0"	5	WOOD	2B	HM	3 H-2 J-1 S-2			5E513AA
5E514	5E514A	4'-0"x7'-0"	6	WOOD	1A	HM	1 H-2 J-1 S-1			5E514A
5E514A	5E514AA	3'-0"x7'-0"	5	WOOD	2B	HM	3 H-2 J-1 S-2			5E514AA
5E515	5E515A	2'-0"x3'-0"x7'-0"	7	WOOD	1B	HM	2 H-2 J-1 S-1			5E515A
5E515A	5E515AA	4'-0"x7'-0"	5	WOOD	2A	HM	3 H-2 J-1 S-2			5E515AA
5E516	5E516A	3'-0"x7'-0"	6	WOOD	5A	HM	1 H-2 J-1 S-1	CLOSER		5E516A
5E517	5E517A	3'-0"x7'-0"	3	WOOD	3	HM	1 H-2 J-2 S-3	CLOSER		5E517A
5E520	5E520A	3'-0"x7'-0"	6	WOOD	5A	HM	1 H-2 J-1 S-1	CLOSER		5E520A
5E521	5E521A	3'-0"x7'-0"	3	WOOD	3	HM	1 H-2 J-1 S-2	CLOSER		5E521A
5E522	5E522A	4'-0"x7'-0"	6	WOOD	5B	HM	1 H-2 J-1 S-1	3/4 HR SMOKE		5E522A
5E523	5E523A	3'-0"x7'-0"	6	WOOD	5A	HM	1 H-2 J-1 S-1	CLOSER		5E523A
5E524	5E524A	3'-0"x7'-0"	6	WOOD	5B	HM	1 H-2 J-1 S-1	3/4 HR SMOKE		5E524A
5E528	5E528A	3'-0"x7'-0"	4	WOOD	5A	HM	1 H-2 J-1 S-1	CLOSER		5E528A
5E528	5E528A	3'-0"x7'-0"	4	WOOD	7	HM	1 H-2 J-1 S-2	PRIVACY LOCK		5E528A
5E529	5E529A	3'-0"x7'-0"	4	WOOD	5A	HM	1 H-2 J-1 S-1	CLOSER		5E529A
5E530	5E530A	3'-0"x7'-0"	1	WOOD	4	HM	1 H-2 J-1 S-3	CLOSER		5E530A
5E531	5E531A	3'-0"x7'-0"	3	WOOD	3	HM	1 H-2 J-1 S-3	CLOSER		5E531A
5E540	5E540A	3'-0"x7'-0"	8	WOOD	9	HM	2 H-1 J-3 S-1	1/3 HR, AUTO		5E540A
5E544	5E544A	3'-0"x7'-0"	6	WOOD	5A	HM	1 H-2 J-1 S-1	CLOSER		5E544A

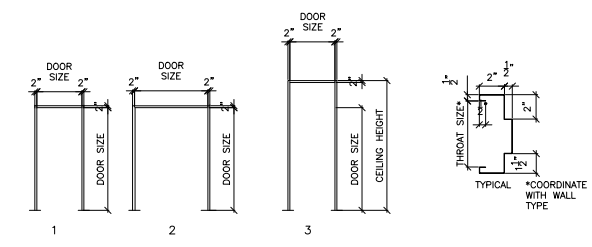
NOTE:
 * 3/4 HOUR LISTED AND LABELED FIRE EXIT PANIC HARDWARE



DOOR DETAILS
 SCALE: 1 1/2" = 1'-0"



DOOR TYPES
 SCALE: 1/4" = 1'-0"



FRAME TYPES
 SCALE: 1/4" = 1'-0"

- NOTES**
- ALL DOORS SHALL BE FLUSH AND 1 1/2" THICK UNLESS NOTED OTHERWISE.
 - SYMBOLS BELOW REFER TO GLAZING DESIGNATIONS & DOOR TYPES IN SCHEDULE.
 - DOOR TYPE WITH GLAZING PRESENT
 - IF GLAZING PRESENT SEE T OR W SUBSCRIPT DESIGNATION ON PLANS
 - GLAZING TYPE SEE SPEC. SECTION 08 00 00
 - AUTOMATIC INTERIOR SWINGING DOORS TO BE PUSH-BUTTON OPERATED. SEE A-103 FOR PUSH-BUTTON LOCATIONS.
 - PROVIDE SANITARY STOP AT ALL DOOR LOCATIONS EXCEPT LABELED DOORS.

DOOR SYMBOL	DOOR MODIFICATIONS
F	FIRE RATED GLASS
H	ELECTRIC HOLD
L	LOUVER
M	MECHANICAL SEAL FOR LIGHT PROOF & SOUND RETARDING DOOR
T	TEMPERED GLASS
U	UNDERCUT 3/4"
W	WIRE GLASS
Z	ELECTROMAGNETIC LOCKING DEVICE ON EXIT DOORS WITH ANNUNCIATION AT CORRIDORS. SEE ELECT. DWGS. AND SPECIFICATION SECTION 08745
HM	HOLLOW METAL

BID SET - 100% CONSTRUCTION DOCUMENTS

FULLY SPRINKLERED

LINDBERGH & ASSOCIATES, LLC
 3170 Ashley Phosphate Road, Suite 504
 Charleston, South Carolina, 29406
 Phone: (843) 553-6670 Fax: (843) 553-0755

CONFIDENTIAL THESE DRAWINGS MUST BE RETURNED TO FACILITIES MANAGEMENT SERVICE, PROJECT SECTION, UPON COMPLETION, OR FINAL USE BY THE CONTRACTOR FOR BIDDING PURPOSES.

ASBESTOS WARNING: ASBESTOS CONTAINING BUILDING MATERIALS (ACBM) ARE PRESENT THROUGHOUT THE FACILITY. IF CONTRACTORS FIND ACBM, OR SUSPECT FINDING ACBM, THEY SHALL IMMEDIATELY STOP WORK AND CONTACT THE PROJECT COR.

SCALING NOTES: FULL SIZE V.A. "T" SHEETS (SCALE AS INDICATED) AND HALF SIZE V.A. "D" SHEETS (G THE SCALE INDICATED LETTER SIZE DRAWINGS ARE NOT TO SCALE).

GENERAL NOTE: CONTRACTORS AND ARCHITECT/ENGINEERING FIRMS ARE RESPONSIBLE FOR THE FIELD VERIFICATION OF ALL EXISTING CONDITIONS.

Project Title
RENOVATE WARD 5 EAST

Drawing Title
FIFTH FLOOR - WARD EAST DOOR SCHEDULE AND DETAILS

Date: 12/21/12
 Project No.: 637-11-119

Building Number: 47
 Checked: JSA
 Drawn: NEK
 Location: ASHEVILLE, NC

DRAWING NO.: A-601
 Dwg 34 Of 78

Office of Facilities
 University of North Carolina