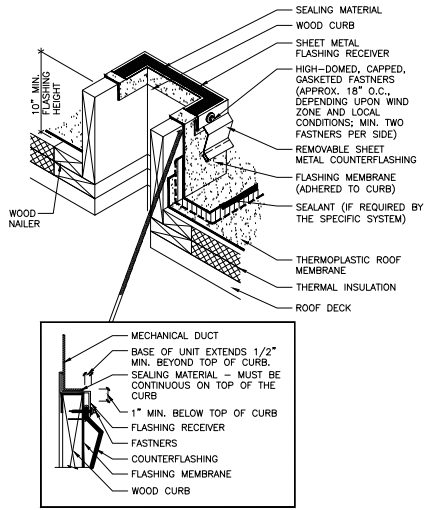


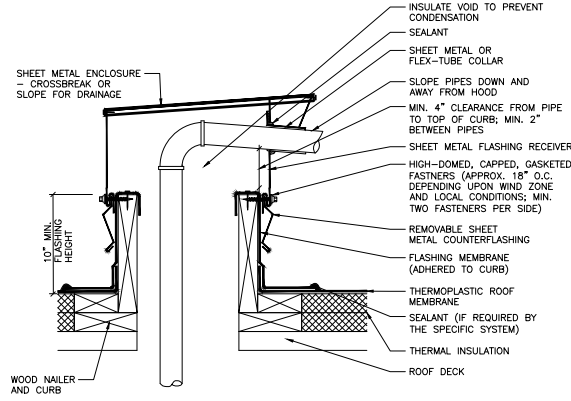
1 2 3 4 5 6 7

A  
B  
C  
D  
E  
F

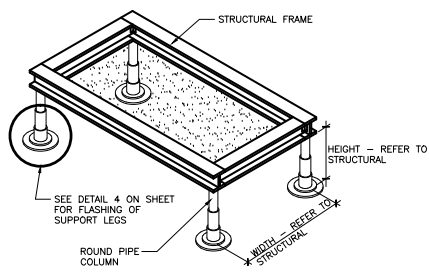
THREE INCHES = ONE FOOT  
ONE AND ONE-HALF INCHES = ONE FOOT  
ONE INCH = ONE FOOT  
THREE-QUARTERS INCH = ONE FOOT  
ONE-HALF INCH = ONE FOOT  
THREE-FOURTHS INCH = ONE FOOT  
ONE-FOURTH INCH = ONE FOOT



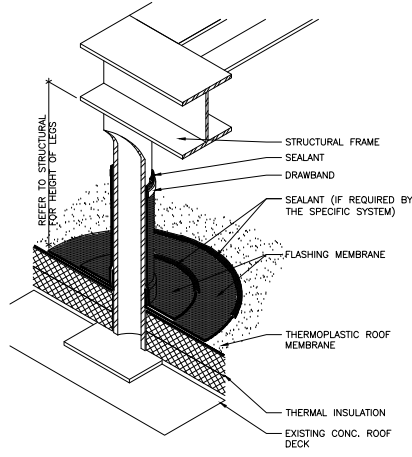
**1 DUCT PENETRATION DETAIL**  
A-1511A-502 SCALE: NTS



**2 PIPE PENETRATION DETAIL**  
A-1511A-502 SCALE: NTS



**3 MECHANICAL UNIT SUPPORT**  
A-1511A-502 SCALE: NTS



**4 SUPPORT LEG FLASHING**  
A-1511A-502 SCALE: NTS

100% SUBMITTAL  
BID SET -  
CONSTRUCTION  
DOCUMENTS  
DATE: DECEMBER, 21 2012

BID SET - 100% CONSTRUCTION DOCUMENTS  
FULLY SPRINKLERED

BY	REVISIONS	DATE

**LINDBERGH & ASSOCIATES, LLC**  
2170 Ashley Phosphate Road, Suite 504  
Charleston, South Carolina, 29406  
Phone: (843)553-6670 Fax: (843)553-0755



**CONFIDENTIAL** THESE DRAWINGS MUST BE RETURNED TO FACILITIES MANAGEMENT SERVICE, PROJECT SECTION, UPON COMPLETION, OR FINAL USE BY THE CONTRACTOR FOR BIDDING PURPOSES.  
**ASBESTOS WARNING:** ASBESTOS CONTAINING BUILDING MATERIALS (ACBM) ARE PRESENT THROUGHOUT THE FACILITY. IF CONTRACTORS FIND ACBM, OR SUSPECT FINDING ACBM, THEY SHALL IMMEDIATELY STOP WORK AND CONTACT THE PROJECT CONTR.  
**SCALING NOTES:** FULL SIZE V.A. "T" SHEETS (SCALE AS INDICATED) AND HALF SIZE V.A. "D" SHEETS ( @ THE SCALE INDICATED LETTER SIZE DRAWINGS ARE NOT TO SCALE.  
**GENERAL NOTE:** CONTRACTORS AND ARCHITECT/ENGINEERING FIRMS ARE RESPONSIBLE FOR THE FIELD VERIFICATION OF ALL EXISTING CONDITIONS.

Project Title  
**RENOVATE  
WARD 5 EAST**

Drawing Title <b>FIFTH FLOOR - WARD EAST ROOF DETAILS</b>	Date 12/21/12
Building Number 47	Checked JSA
Location ASHEVILLE, NC	Drawn NEK
DRAWING NO. A-502	Dwg 33 of 78

