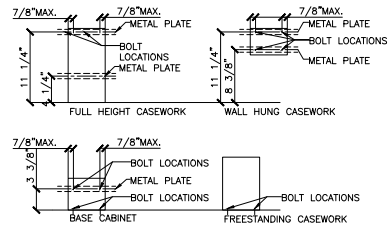


1 TYPICAL BRACKET FOR WALL MOUNTED FLAT SCREEN TV'S
SCALE: 1-1/2" = 1'-0"

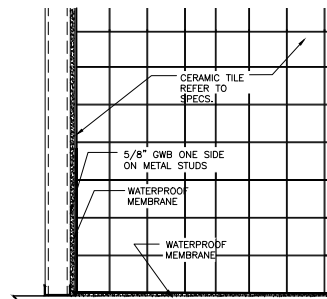
* PER MFG'S STANDARD LOCATION WALL BRACKET DETAIL.
CONTRACTOR TO PROVIDE SUPPORT IN WALL AND BRACKET, POWER WIRING, ANTENNA WIRING AND OUTLETS. BRACKET TO BE PEERLESS MODEL ST 630, ST630-S WALL MOUNT OR EQUAL.
CONTRACTOR TO INSTALL WALL BRACKET IN ACCORDANCE WITH MFG'S RECOMMENDATION AND SEISMIC REQUIREMENTS FOR AREA.



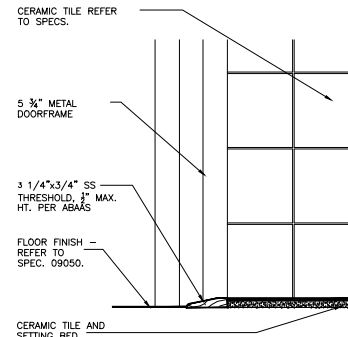
2 ELEVATIONS
SCALE: 1-1/2" = 1'-0"

- NOTES:**
1. THE CONTRACTOR SHALL COORDINATE LOCATIONS & LENGTH OF PLATE FROM THE SHOP DRAWINGS BEFORE INSTALLING THE PLATE.
 2. PROVIDE BOLTS A 2'-0" O.C. MIN. MINIMUM OF TWO BOLTS PER PLATE IN EACH CABINET.
 3. MINIMUM OF THREE POP RIVETS OR SELF TAPPING SCREWS PER STUD. PLATE SHALL SPAN MINIMUM OF THREE STUDS.

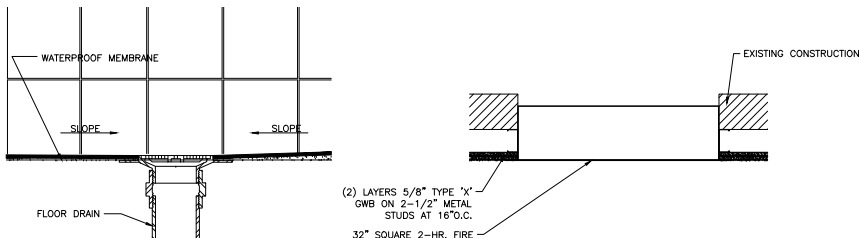
2 CABINET SUPPORT DETAILS
SCALE: 1-1/2" = 1'-0"



3 DETAIL AT TYPICAL SHOWER UNIT
SCALE: 1-1/2" = 1'-0"



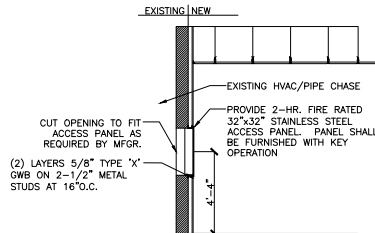
4 SECTION AT PATIENT BEDROOM AND TOILET FLOOR DETAIL
SCALE: 3" = 1'-0"



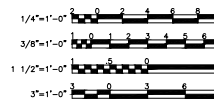
5 DETAIL AT TYPICAL SHOWER AND TOILET DRAIN
SCALE: 3" = 1'-0"

(2) LAYERS 5/8" TYPE "X" GWB ON 2-1/2" METAL STUDS AT 16" O.C.
32" SQUARE 2-HR. FIRE RATED ACCESS DOOR

6 DETAIL AT FIRE RATED ACCESS DOOR
SCALE: 1-1/2" = 1'-0"



7 ACCESS DOOR SECTION
SCALE: 3/8" = 1'-0"



100% SUBMITTAL
BID SET - CONSTRUCTION DOCUMENTS
DATE: DECEMBER, 21 2012

BID SET - 100% CONSTRUCTION DOCUMENTS

FULLY SPRINKLERED

BY	REVISIONS	DATE



CONFIDENTIAL THESE DRAWINGS MUST BE RETURNED TO FACILITIES MANAGEMENT SERVICE, PROJECT SECTION, UPON COMPLETION, OR FURTHER USE BY THE CONTRACTOR FOR BIDDING PURPOSES.

ASBESTOS WARNING: ASBESTOS CONTAINING BUILDING MATERIALS (ACBM) ARE PRESENT THROUGHOUT THE FACILITY. IF CONTRACTORS FIND ACBM, OR SUSPECT FINDING ACBM, THEY SHALL IMMEDIATELY STOP WORK AND CONTACT THE PROJECT COR.

SCALING NOTES: FULL SIZE V.A. "T" SHEETS (SCALE AS INDICATED) AND HALF SIZE V.A. "D" SHEETS (S THE SCALE INDICATED LETTER SIZE DRAWINGS ARE NOT TO SCALE.

GENERAL NOTE: CONTRACTORS AND ARCHITECT/ENGINEERING FIRMS ARE RESPONSIBLE FOR THE FIELD VERIFICATION OF ALL EXISTING CONDITIONS.

Project Title
RENOVATE WARD 5 EAST

Drawing Title	Date
FIFTH FLOOR - WARD EAST	12/21/12
ELEVATION DETAILS	Project No. 637-11-119
Building Number 47	Checked JSA
Location ASHEVILLE, NC	Drawn ALM
	DRAWING NO. A-405
	Dwg 31 Of 78

