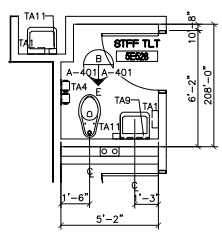
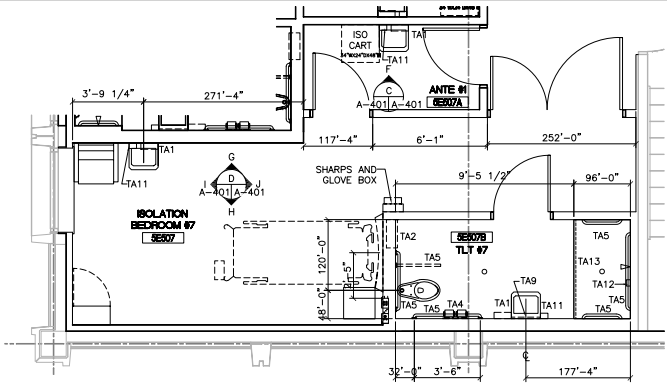


**ENLARGED PLAN
PATIENT ADA TOILET - SE515A**
A-401A-102 SCALE: 3/8" = 1'-0"



**ENLARGED PLAN
STAFF TOILET - SE528**
A-401A-102 SCALE: 3/8" = 1'-0"

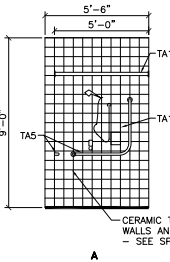


**ENLARGED PLAN - ISOLATION BEDROOM #7 - SE507,
ANTE #1 - SE507A AND TLT #7 - SE507B**
A-401A-102 SCALE: 3/8" = 1'-0"

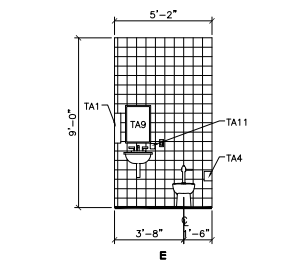
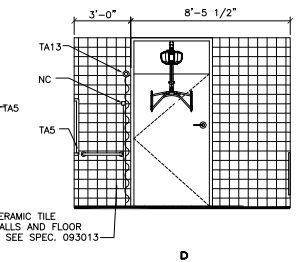
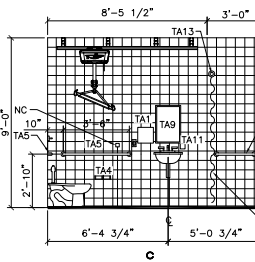
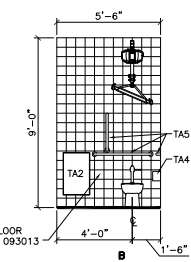
- TOILET ACCESSORY LEGEND:**
- TA1 PAPER TOWEL DISPENSER (NIC)
 - TA2 BED PAN CABINET
 - TA3 GLOVE DISPENSER AND HOLDERS (NIC)
 - TA4 TOILET TISSUE DISPENSER
 - TA5 GRAB BARS
 - TA6 SANITARY NAPKIN DISPOSAL
 - TA7 UNDER LAVATORY GUARD
 - TA8 CLOTHES HOOKS, ROBE OR COAT
 - TA9 METAL FRAMED MIRROR
 - TA10 MOP RACKS, TYPE 10
 - TA11 SOAP DISPENSER (NIC)
 - TA12 RECESSED SOAP DISH
 - TA13 SHOWER CURTAIN ROD
 - NC NURSE CALL
 - CT CURTAIN TRACK
 - Denotes fixture clearance
 - (NIC) NOT IN CONTRACT

- GENERAL NOTES**
- A. SEE A-131 FOR ALL CUBICLE CURTAIN TRACK (CT) AND SHOWER CURTAIN ROD (TA13) LOCATIONS.
 - B. BOTTOM OF ALL RECESSED SOAP DISH (TA12) @ 40" A.F.F., UNO

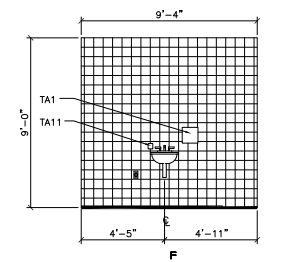
100% SUBMITTAL
BID SET -
CONSTRUCTION
DOCUMENTS
DATE: DECEMBER, 21 2012



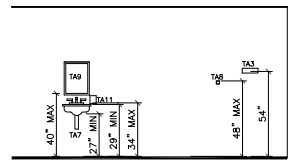
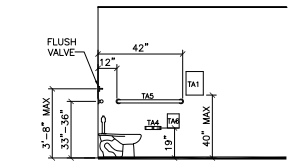
**INTERIOR ELEVATIONS
PATIENT ADA TOILET - SE515A**
A-401A-401 SCALE: 3/8" = 1'-0"



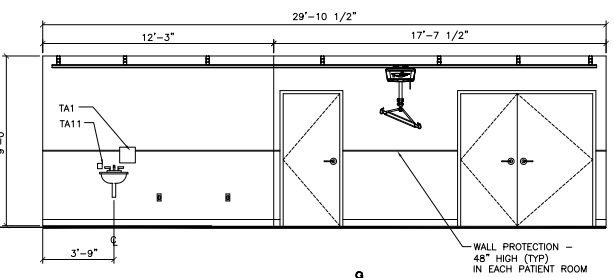
**INTERIOR ELEVATION
STAFF TOILET - SE528**
A-401A-401 SCALE: 3/8" = 1'-0"



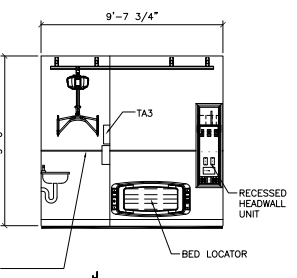
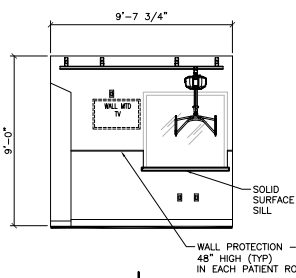
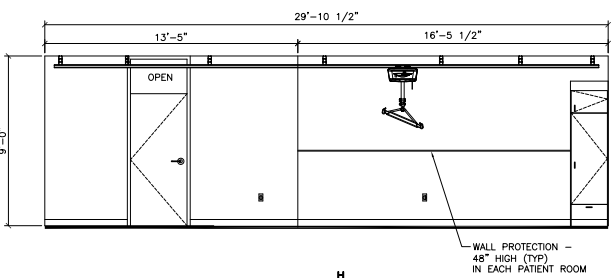
**INTERIOR ELEVATION
ANTE #1 - SE507A**
A-401A-401 SCALE: 3/8" = 1'-0"



**ADA COMPLIANT MOUNTING HTS.
FOR TOILET ACCESSORIES**
SCALE: 3/8" = 1'-0"



**INTERIOR ELEVATIONS
ISOLATION BEDROOM #7 - SE507**
A-401A-401 SCALE: 3/8" = 1'-0"



**INTERIOR ELEVATIONS
ISOLATION BEDROOM #7 - SE507**
A-401A-401 SCALE: 3/8" = 1'-0"

BID SET - 100% CONSTRUCTION DOCUMENTS

FULLY SPRINKLERED

BY	REVISIONS	DATE

LINDBERGH & ASSOCIATES, LLC
2170 Ashley Phosphate Road - Suite 504
Charleston, South Carolina, 29406
Phone: (843)553-6670 Fax: (843)553-0755



CONFIDENTIAL THESE DRAWINGS MUST BE RETURNED TO FACILITIES MANAGEMENT SERVICE, PROJECT SECTION, UPON COMPLETION, OR FINAL USE BY THE CONTRACTOR FOR BIDDING PURPOSES.

ASBESTOS WARNING: ASBESTOS CONTAINING BUILDING MATERIALS (ACBM) ARE PRESENT THROUGHOUT THE FACILITY. IF CONTRACTORS FIND ACBM, OR SUSPECT FINDING ACBM, THEY SHALL IMMEDIATELY STOP WORK AND CONTACT THE PROJECT COR.

SCALING NOTES: FULL SIZE V.A. "T" SHEETS (SCALE AS INDICATED) AND HALF SIZE V.A. "D" SHEETS (@ THE SCALE INDICATED LETTER SIZE DRAWINGS ARE NOT TO SCALE.

GENERAL NOTE: CONTRACTORS AND ARCHITECT/ENGINEERING FIRMS ARE RESPONSIBLE FOR THE FIELD VERIFICATION OF ALL EXISTING CONDITIONS.

Project Title
**RENOVATE
WARD 5 EAST**

Drawing Title
**FIFTH FLOOR - WARD EAST
ENLARGED PLANS
AND ELEVATIONS**

Date: 12/21/12
Project No.: 637-11-120
Building Number: 47
Checked: JSA
Drawn: NEK
Location: ASHEVILLE, NC

Office of Facilities
Department of Veterans Affairs

DRAWING NO.: A-401
Dwg 27 of 78