

1 | 2 | 3 | 4 | 5 | 6 | 7

A
B
C
D
E
F

NEW EXISTING

THREE INCHES = ONE FOOT

ONE AND ONE-HALF INCHES = ONE FOOT

ONE INCH = ONE FOOT

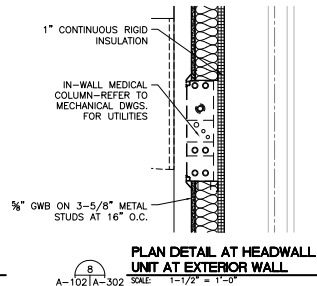
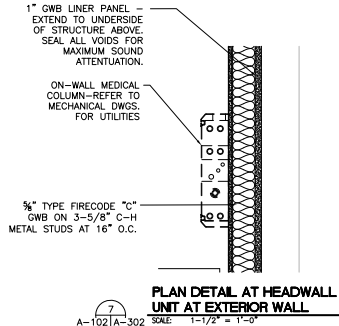
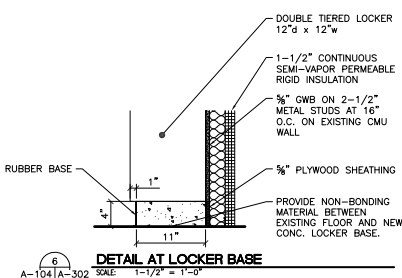
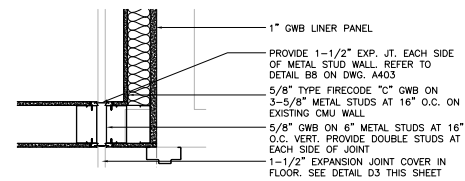
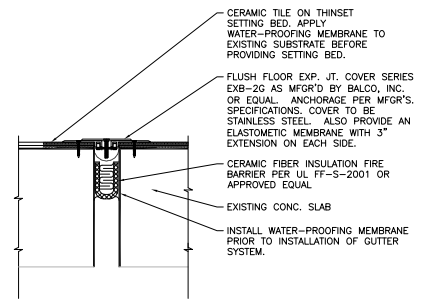
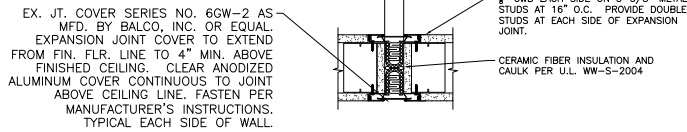
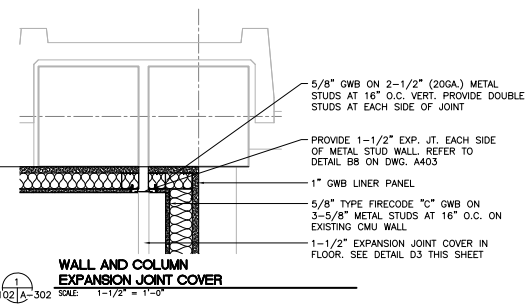
THREE-QUARTERS INCH = ONE FOOT

ONE-HALF INCH = ONE FOOT

THREE-FOURTHS INCH = ONE FOOT

ONE-QUARTER INCH = ONE FOOT

ONE-EIGHTH INCH = ONE FOOT



5 NOT USED A-302 SCALE: -

100% SUBMITTAL
BID SET - CONSTRUCTION DOCUMENTS
DATE: DECEMBER, 21 2012

BID SET - 100% CONSTRUCTION DOCUMENTS

FULLY SPRINKLERED



BY	REVISIONS	DATE

LINDBERGH & ASSOCIATES, LLC
2170 Ashley Phosphate Road - Suite 504
Charleston, South Carolina, 29406
Phone: (843)553-6670 Fax: (843)553-0755



CONFIDENTIAL THESE DRAWINGS MUST BE RETURNED TO FACILITIES MANAGEMENT SERVICE, PROJECT SECTION, UPON COMPLETION, OR FINAL USE BY THE CONTRACTOR FOR BIDDING PURPOSES.

ASBESTOS WARNING: ASBESTOS CONTAINING BUILDING MATERIALS (ACBM) ARE PRESENT THROUGHOUT THE FACILITY. IF CONTRACTORS FIND ACBM, OR SUSPECT FINDING ACBM, THEY SHALL IMMEDIATELY STOP WORK AND CONTACT THE PROJECT COR.

SCALING NOTES: FULL SIZE V.A. T" SHEETS (SCALE AS INDICATED) AND HALF SIZE V.A. "D" SHEETS (@ THE SCALE INDICATED LETTER SIZE DRAWINGS ARE NOT TO SCALE.

GENERAL NOTE: CONTRACTORS AND ARCHITECT/ENGINEERING FIRMS ARE RESPONSIBLE FOR THE FIELD VERIFICATION OF ALL EXISTING CONDITIONS.

Project Title
RENOVATE WARD 5 EAST

Drawing Title
FIFTH FLOOR - WARD EAST DETAILS

Building Number 47
Checked JSA
Drawn NEK
Location ASHEVILLE, NC

Date 12/21/12
Project No. 637-11-119
DRAWING NO. A-302
Dwg 24 of 78

Office of Facilities
Department of Veterans Affairs