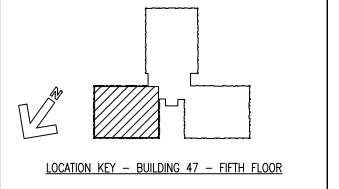


- GENERAL NOTES**
- MAINTAIN MINIMUM OF 18" CLEARANCE ON LATCH PULL SIDE AND MINIMUM OF 12" CLEARANCE ON PUSH SIDE OF DOOR AS REQUIRED BY CODE. EXCEPTION AT PATIENT ROOM DOORS.
 - PROVIDE CONTINUOUS 1.5" RIGID INSULATION AND A 2-1/2" METAL STUD FURR-OUT ALONG ALL EXTERIOR PERIMETER WALLS WITH BATT INSULATION TO ACHIEVE R=11 U.N.O. REFER TO WALL TYPES FOR VARIATIONS.
 - PROVIDE ACOUSTICAL BATT INSULATION IN BETWEEN EACH PATIENT ROOM, TOILETS, OFFICES, STAFF LOUNGE AND CONFERENCE ROOM.
 - PROVIDE 6", 8" OR 12" METAL STUDS AS REQUIRED FOR PLUMBING, ELECTRICAL PANELS, OUTLETS, DEVICES, PIPES AND FIRE EXTINGUISHER CABINETS.
 - HINGE SIDE OF DOOR FRAMES SHALL BE INSTALLED 4" FROM PERPENDICULAR WALL, U.N.O.
 - EXISTING COLUMNS SHALL BE FURRED-OUT WITH 3" FURRING CHANNELS 16" O.C. AND 5/8" GYPSUM BOARD TO RECEIVE NEW FINISHES.
 - CONTRACTOR TO FIELD VERIFY EXISTING CONDITIONS AND ALL DIMENSIONS.
 - DIMENSIONS SHOWN ON THE FLOOR PLANS FOR NEW CONSTRUCTION ARE TO CENTERLINE OF COLUMNS, TO FACE OF INTERIOR STUD WALLS AND TO FACE OF CONCRETE OR MASONRY WALLS.
 - DO NOT SCALE DRAWINGS. IF DIMENSIONS ARE IN QUESTION, THE CONTRACTOR SHALL BE RESPONSIBLE FOR OBTAINING CLARIFICATION FROM THE COR BEFORE CONTINUING WITH CONSTRUCTION.
 - FOR FURTHER DIMENSIONING, SEE LARGE SCALE PLANS, SECTIONS, INTERIOR ELEVATIONS, AND DETAILS.
 - REFER TO A-303 FOR COLUMN DETAILS.

100% SUBMITTAL
 BID SET
 CONSTRUCTION DOCUMENTS
 DATE: DECEMBER, 21 2012

- LEGEND**
- EXISTING TO REMAIN
 - NEW WALL
 - SMOKE RESISTIVE, POSITIVE LATCHING
 - SMOKE PARTITION (HAZARDOUS), 3/4 HR. LBL. CLOSER
 - SMOKE BARRIER (1 HOUR FIRE RESISTANT RATED), 3/4 HR. LBL., HOLD OPENS
 - 1-HOUR FIRE RESISTANT RATED BARRIER (HAZ.), 3/4 HR. LBL., CLOSER
 - EXISTING TO REMAIN 2-HOUR FIRE RATED



BID SET - 100% CONSTRUCTION DOCUMENTS

FULLY SPRINKLERED

FIFTH FLOOR - WARD EAST - WALL TYPES AND DOOR NUMBERS
 SCALE: 1/4" = 1'-0" 1/4" = 1'-0"

BY	REVISIONS	DATE

LINDBERGH & ASSOCIATES, LLC
 2170 Ashley Phosphate Road, Suite 304
 Charleston, South Carolina, 29406
 Phone: (843)553-6670 Fax: (843)553-0755



CONFIDENTIAL THESE DRAWINGS MUST BE RETURNED TO FACILITIES MANAGEMENT SERVICE, PROJECT SECTION, UPON COMPLETION, OR FINAL USE BY THE CONTRACTOR FOR BIDDING PURPOSES.

ASBESTOS WARNING: ASBESTOS CONTAINING BUILDING MATERIALS (ACBM) ARE PRESENT THROUGHOUT THE FACILITY. IF CONTRACTORS FIND ACBM, OR SUSPECT FINDING ACBM, THEY SHALL IMMEDIATELY STOP WORK AND CONTACT THE PROJECT COR.

SCALE NOTINGS: FULL SIZE V.A. "T" SHEETS (SCALE AS INDICATED) AND HALF SIZE V.A. "D" SHEETS (8 THE SCALE INDICATED LETTER SIZE DRAWINGS ARE NOT TO SCALE.

GENERAL NOTE: CONTRACTORS AND ARCHITECT/ENGINEERING FIRMS ARE RESPONSIBLE FOR THE FIELD VERIFICATION OF ALL EXISTING CONDITIONS.

Project Title
**RENOVATE
 WARD 5 EAST**

Drawing Title
**FIFTH FLOOR - WARD EAST
 WALL TYPES AND
 DOOR NUMBERS**

Building Number: 47
 Location: ASHEVILLE, NC

Date: 12/21/12
 Project No.: 637-11-119
 Drawing No.: A-104
 Dwg 18 of 78

Office of Facilities
 University of North Carolina